

Handbook of BYLAWS

Bylaws Rules – 1-12 (Effective 2021)

Bylaws Rules – 13-43

*Effective
Jan 2025*



PONY CLUB
VICTORIA



PONY CLUB
VICTORIA

Inc AS00013413S | ABN: 64 320 020 091

Handbook of By Laws

Rules 1 -12

Effective 1st January 2021

**Supersedes all previous editions –
only By Laws in this edition are applicable**

Includes Amended Rule 8 - Effective 4 May 2022

FOREWORD

There are thousands of pony club members participating in PCV ranging from the new to the experienced. Within this environment, achieving the aims of this book is an essential ingredient to creating harmony and fulfilment within a club, zone and at competitions.

Therefore, the continuing education of both new and experienced club members in all PCV rules is necessary. Experienced club members should not rely on memory and new club members should not remain ignorant. The state council asks all clubs and zones to promote actively the need to become very familiar with these rules and for club members to undertake self-education.

AIMS OF THIS HANDBOOK

These rules:

- Allow uniformity and consistency of methodology within PCV between clubs and between zones
- Provide a level playing field for competition
- Minimise risk to our riding members, clubs and zones.

HANDBOOK DEFINITIONS

This handbook contains both By Laws and comment and must be read in conjunction with all other rule books published by the PCV.

By Laws are rules that the PCV State Council have officially ratified. All club members, affiliated pony clubs and zones of the PCV must strictly follow and adhere to them.

- All matters in this book are by-laws unless specifically marked as Comment. Comment items are not rules but are designed to provide practical assistance, guidance and recommended procedures for clubs and zones.
- In this handbook, the following definitions apply:
 - “PCV” means Pony Club Victoria Inc.
 - “Club member” means a person who meets one of the definitions in rule 13.5.
 - “Pony club”, “club”, “member pony club” or “probationary pony club” means an organisation affiliated with the PCV.
- Unless stated to the contrary, a reference in this handbook to a rule, in this handbook or elsewhere, refers to the rule and all its sub-clauses.
- Unless otherwise specified, reference to a rule number means the rules within this handbook.
- The singular includes the plural and vice versa; and words importing one gender include the other.
- Some reference material noted in this book is available from the PCV web site; such material is also available from the PCV state office in a printed format. PCV may charge a fee for printed information.

PCV AIMS AND OBJECTIVES

- To encourage young people to ride and to learn to enjoy all approved types of sport connected with horse riding.
- To provide instruction in horsemanship, riding and the proper care of horses.
- To promote the highest ideals of sportsmanship, citizenship and loyalty, thereby cultivating strength of character and self-discipline.

TABLE OF CONTENTS

1	Pony Club as a Youth Movement	9
1.1	Introduction	9
1.2	Suggestions for Success	9
2	The PCV	10
2.1	Brief Overview	10
2.2	Organisation Structure	10
2.3	Membership Structure.....	11
3	PCV Insurance	11
3.1	Overview	11
3.2	Day Participation/Open Riders	11
4	State Council	12
4.1	State Council Structure	12
4.2	Appointment of State Council Members	12
4.3	Coaching Director	13
4.4	State Chief Instructors’ Panel (CIP).....	13
4.5	Sub-Committees	13
4.6	Affiliation with other Bodies and affiliation with PCV	14
4.7	PCV Conference	14
5	Zones	14
5.1	Zone Structure	14
5.2	Zone Fees and Levies	15
5.3	Zone Representative.....	15
5.4	Zone President	16
5.5	Zone Vice-President.....	16
5.6	Zone Secretary	16
5.7	Zone Treasurer.....	16
5.8	Zone Chief Instructor (ZCI).....	16
5.9	Zone DCI and ZA Panel.....	17
5.10	Other Duties of the Zone DCI and ZA Panel.....	17
5.11	Zone Chief Instructor Appointment.....	17
5.12	Zone Chief Instructor Casual Vacancy	18
5.13	Deputy Chief Instructor Appointment.....	18
5.14	Zone Assistant Appointment	18
5.15	Zone Examining Secretary (ZES)	19
5.16	Zone Junior Committee	19
6	Pony Clubs	19
6.1	Relationship to PCV	19
6.2	Club Renewal with PCV.....	20
6.3	Club Committee	20
6.4	Club President.....	20
6.5	Club Vice-President.....	20
6.6	Club Secretary - Public Officer	20
6.7	Club Treasurer	21
6.8	Incorporation Requirements	21
6.9	Club District Commissioner (DC) Eligibility	21
6.10	Appointment of DC.....	21
6.11	Duties of DC	22
6.12	Club Chief Instructor (CCI)	22
6.13	Club Instructors.....	23
6.14	Junior Committee	23
6.15	Club Attendance Register	23
7	Forming a New Pony Club	23

7.1	Planning	23
7.2	Public Meeting	24
7.3	After the Public Meeting.....	24
7.4	Probationary Membership.....	24
7.5	Review at 6 Months	25
7.6	Application for Full Affiliation	25
7.7	Full Affiliation.....	25
8	Working with Children Act	26
8.1	Policy.....	26
8.2	Applicable Personnel	26
8.3	Negative Notice	26
8.4	Procedure.....	26
9	Fees – PCV, Zones and Clubs	26
9.1	PCV Year.....	26
9.2	Membership of PCV and Renewal	27
9.3	PCV Annual Fees and Registration.....	27
9.4	Due Dates for PCV Fees	27
9.5	Zone Direct Fees	27
9.6	Club Direct Fees	27
9.7	Debtor Clubs and Zones.....	28
9.8	Penalties for Non-Payment or Non-Compliance	28
9.9	Club Re-affiliation after Payment of Fees.....	28
10	PCV Club Member Fee Requirements	28
10.1	Primary Requirement.....	28
10.2	Eligibility before Payment and Riding.....	28
10.3	Applicable Categories for PCV Club Member Fee.....	28
10.4	PCV Club Member Fees.....	29
10.5	Due Date of Registration and Payment	29
10.6	PCV Issue of Club Member Card	29
10.7	PCV Benefit Entitlements.....	29
11	Eligibility and Registration of Club Personnel with PCV	29
11.1	Why Registration is Required	29
11.2	Procedure Required before Registration.....	29
11.3	Who Must be Registered	30
12	Club Recession or Winding Up	30
12.1	Recession	30
12.2	Club Winding Up	30

ABBREVIATIONS

Throughout this handbook there are some abbreviations often used within pony club:

Abbreviation	Term
CCI	Club Chief Instructor
CIP	State Chief Instructors' Panel
DAP	Disability Action Plan
DC	District Commissioner
DCI	Deputy Chief Instructor
EA	Equestrian Australia
EV	Equestrian Victoria
HC	Hors Concours
NCAS	National Coaching Accreditation Scheme
PCA	Pony Club Australia Inc.
PCV	Pony Club Victoria
PCVEC	Pony Club Victoria Equestrian Centre
RWH	Riders Without Horses
RDA	Riding for the Disabled
ZA	Zone Assistant
ZCI	Zone Chief Instructor
ZES	Zone Examining Secretary

1 Pony Club as a Youth Movement

1.1 Introduction

Comment: As a youth organisation, pony club encourages young people to ride and learn to enjoy all approved kinds of sport connected with horses, riding and the correct care of horses. Instructors and helpers are primarily youth leaders. They gather a group of young people with a common interest, the horse, which is of the greatest importance. Pony club places in order of significance:

- The safety of the member.
- The comfort of the horse.
- The enjoyment of the rider.
- The progress of the rider.

Instruction is essential. Improving the standard of instruction is important but as a youth movement, pony club has added qualities to consider.

One of the main objectives of all youth movements – whatever the medium they use to attract their members – is to “promote the highest ideals of sportsmanship, citizenship and loyalty, thereby cultivating strength of character and self-discipline.”

The achievement of these objectives, together with sound horsemastership and riding skills is pony club’s aim. Happy clubs and their members mean we are fulfilling our aim.

1.2 Suggestions for Success

Comment

- Know your members as individuals.
- Know their names, personalities, capabilities and difficulties – take the time to talk and listen to them.
- Encourage communication between all members, officials and instructors at each club activity.
- Make your club an effective meeting place.
- Create the opportunities to promote socialising skills throughout the club; such as age and skill group mixing, adult and member mixing.
- Encourage a sense of belonging and importance to the club.
- Train your members for riding and life.
- Create the environment for the member to exercise judgement, focusing the training on the ability to make a choice rather than making the correct choice.
- Challenge each member.
- Activities must be stimulating. Try to cater for each member’s individual interests at least once in your program.
- Imagination is the key to providing challenge. Meeting one challenge may lead a member to apply the same approach to other areas.
- Talk to other clubs to discover the activities they are using. Ask the club’s members what they find most stimulating.
- Pony club’s aim is simple and non-restricting. Pony club should be the same.
- Be “open minded” and not “locked in” to old ideas. Change is essential, where individuals are changing, but the basic principles remain the same.
- Remember – the key issues are involvement and participation in life.
- Offer what is wanted at pony club and make it the best offering.

2 The PCV

2.1 Brief Overview

- 2.1.a The PCV was formed in January 1954, with a membership of seven affiliated clubs.
- 2.1.b The affairs of PCV have been administered from the PCV state office since May 1974. The Brighton property was purchased with the assistance of the member clubs and has been wholly owned by the PCV since 1976 until 2008 when this was sold and a building in Mulgrave was purchased. The state office is named “Irving House” as a tribute to Miss Kay Irving MBE, who was chief instructor of PCV from 1958 – 1983.
- 2.1.c The PCV is affiliated with the British Horse Society (BHS), Pony Club Australia (PCA) and the Equestrian Australia (EA).
- 2.1.d The PCV was incorporated under the Victorian Associations Incorporation Act (the Act) on 26 May 1987.

2.2 Organisation Structure

- 2.2.a A committee of management manages the affairs of the Association, in accordance with the Victorian Associations Incorporation Act. Under the PCV rules of incorporation, the PCV committee of management is the state council.
- 2.2.b Member clubs and zones, wishing to have business put before the state council, may do so following this path of information flow:
 - i. A club member may submit business to their club and, if approved, the club will submit it to its zone.
 - ii. A club may submit business to its zone and, if approved, the zone will submit it to the state council.
 - iii. A zone may have other general business at its committee meetings and, if approved, the zone will submit it to the state council.
 - iv. The structure is illustrated in figure 1.

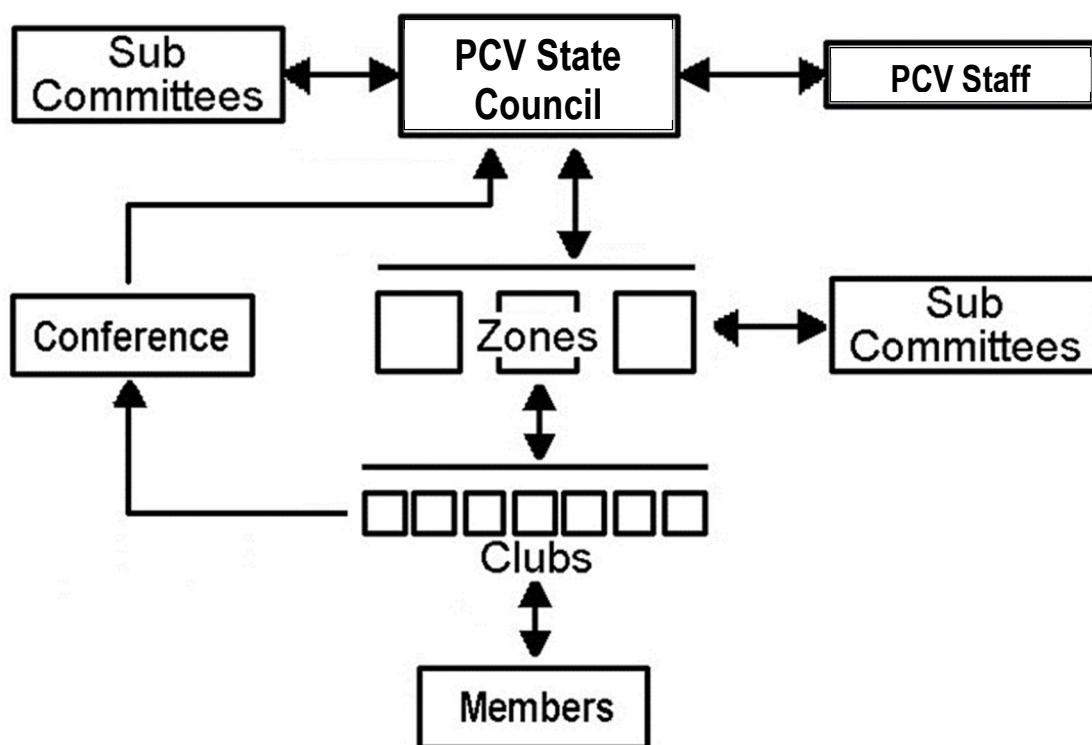


Figure 1. PCV information flow

- 2.2.c The only exceptions to this structure are:
- i. The state council may distribute news bulletins, minutes, urgent information and confidential matters necessary under privacy laws, directly to zones, clubs and club members through both written and/or electronic transmission.
 - ii. Clubs may submit business directly to the state council for a PCV conference, in accordance with rule 4.7.

2.3 Membership Structure

2.3.a Refer to rules 6.1 and rule 11, which are summarised in figure 2.

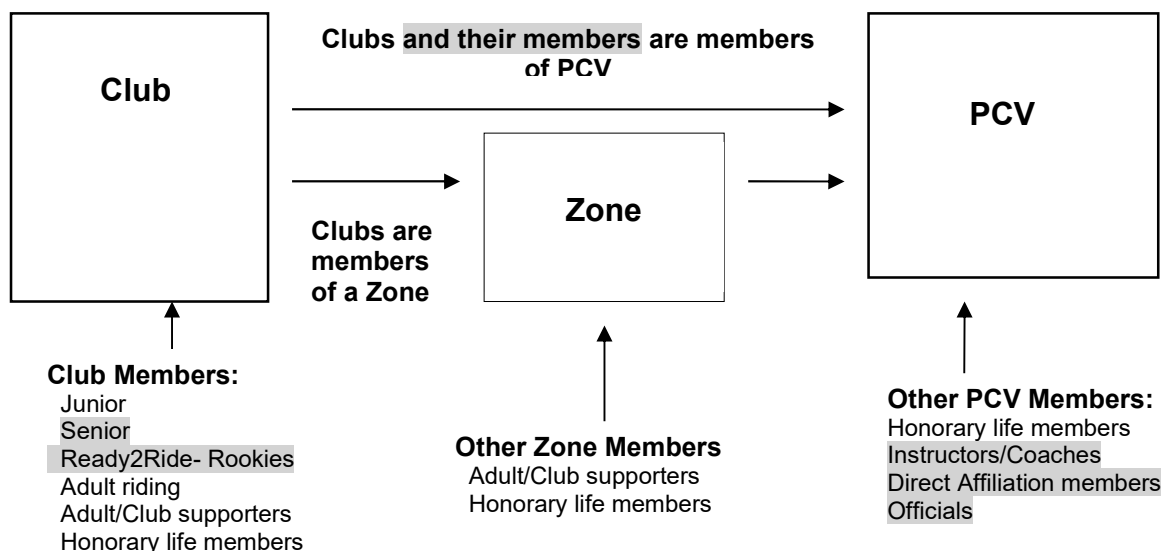


Figure 2. Member—club— zone—PCV membership structure

2.3.b In addition, PCV requires membership of all instructors, coaches, and club and zone officials.

3 PCV Insurance

3.1 Overview

- 3.1.a PCV must subscribe to compulsory insurance policies, as prescribed from time to time by the state council, for the benefit of PCV, zones, clubs and club members, including volunteers who are registered PCV, in accordance with rule 11.
- 3.1.b Zones, clubs and club members must not act outside of the rules and policies of PCV, in accordance with this quote from the insurance policy:
- “Insurance cover has been structured based on PCV risk management policies, procedures, rules and regulations and anyone acting outside these guidelines may prejudice their entitlement under the policy or be left uninsured.”
- 3.1.c Policy details are available from the PCV web site at www.ponyclubvic.org.au or state office.

3.2 Day Participation/Open Riders

- 3.2.a All open section participants defined in rule 30, including PCV riding members who cannot prove current membership, must participate as:
- i. one of the Direct Affiliation members as follows:
 - an Event Member who
 - has purchased an Event membership and

- signed the online indemnity form found on MyPonyClub or Try booking. Event Membership lasts for the duration of the activity.
- or
- a Competition Member who
 - has purchased a full year Competition membership which enables them to compete at Open Competitions without paying an Event Membership each time they attend an event,
 - has some form of insurance through another organisation that covers them for competing at other organisations,
- and
- can prove their membership status with PCV by showing their virtual card found on the Pony Club Australia APP.
- or
- ii. a Day Participant (this option lapses 30 June 2021) who has
 - signed a Public Liability Declaration form to cover the duration of the competition/activity, and
 - paid a day participation fee as specified on the Day Participation form for each day of participation/competition,
- 3.2.b Activities include but are not limited to competitions, clinics and workshops and excludes rallies.
- 3.2.c Day Participation/Event members and 'Come and Try Pony Club' riders do not have personal accident insurance and membership is restricted to attendance at authorised activities but excluding while travelling to or from the site of the said activity. Nobody may promise any insurance, other than as described on the appropriate forms
- 3.2.d Public liability insurance is extended to open sections and Come and Try Pony club riders, in accordance with rule 3.2, providing:
- i. Each participant completes the PCV Public Liability - Day Participation form or registers online as an Event Member, and
 - ii. pays the scheduled fee as applicable.
- 3.2.e The organising committee must remit the Day Participation Forms or Remittance Summary form, with the fees, to the PCV state office within seven days after the activity.

4 State Council

4.1 State Council Structure

- 4.1.a The state council is the controlling body of PCV, in accordance with rule 2.2.
- 4.1.b In accordance with the PCV rules of incorporation, the state council consists of:
- i. Office bearers, who are the president, two vice-presidents and a treasurer,
 - ii. An elected representative from each zone, known as zone representatives
 - iii. The coaching director, without voting rights.
- 4.1.c Minutes of council meetings are available after the PCV president has signed the minutes and within 21 days of the applicable meeting.

4.2 Appointment of State Council Members

- 4.2.a The Annual General Meeting held on such a day no later than October 31st and at such a place as state council determines, elects the president and vice-presidents for two year terms.
- 4.2.b At the AGM, each pony club has one vote, either by a nominated club delegate or by proxy.
- 4.2.c The state council appoints the treasurer. The term of tenure for a new appointment is one year. Following a review, the term of the appointment will be two years.

- 4.2.d Zone representatives are elected, in accordance with rule 5.1.e.
- 4.2.e The coaching director is appointed, in accordance with rule 4.3.a.

4.3 Coaching Director

- 4.3.a The coaching director is appointed by the state council.
- 4.3.b The coaching director is responsible for the policy and direction of instruction throughout the PCV, subject to ratification by the state council.
- 4.3.c All zones must forward to the Coaching Director for approval, any training resources prior to release. This includes DVD's, videos and books. A stamp of 'PCV Approved' will be applied to any approved PCV Training resource.

4.4 State Chief Instructors' Panel (CIP)

- 4.4.a The chief instructors' panel consists of all zone chief instructors and the coaching director, who may act as chairperson.
- 4.4.b The CIP must meet at least twice each year to plan the implementation of the instructional policies and provide guidance and direction as required.
- 4.4.c The state council must ratify all new policies developed by the CIP before they are implemented.

4.5 Sub-Committees

- 4.5.a At the first State Council meeting after the AGM, the event sub-committees are appointed for the Dressage and Showjumping State Championships; the Horse Trials State Championships; the Inter Zone Teams Horse Trials; Games, Flat and Musical Ride Teams State Championships; The National Mounted Games and Tetrathlon.
 - i. Any person wishing to be appointed to a State sub-committee must complete and forward to PCV prior to the AGM an expression of interest form, available from the PCV Website.
 - ii. Committee terms are three years.
- 4.5.b Sub-committees of the state council must report to, and are responsible to, the state council and must follow all directives given by the state council.
- 4.5.c Appointments are for a three-year term and one-third of the sub-committee retires each year, or as prescribed from time to time by the state council. Retiring sub-committee members may be reappointed.
- 4.5.d The state council must approve all documentation (entry forms, programs and promotional material) intended for activities and competitions organised by a sub-committee, before release and distribution of this documentation to the zones, clubs and club members.
- 4.5.e The sub-committee must submit this documentation to the state office for placement on the state council agenda at least three weeks before a scheduled state council meeting as follows:
 - i. Either: at the specified state council meeting for any of the competitions, in accordance with rules 37 and 39.
 - ii. Or: if not specified, at a state council meeting that allows sufficient time for the organising committee to gain approval and make amendments as required within its time requirements.
- 4.5.f Where a sub-committee is required to incur expenses to fulfil its purposes, it must submit a budget for the ensuing year and/or specific purposes to the state treasurer for approval and then ratification by the state council before it incurs any expenditure.

4.6 Affiliation with other Bodies and affiliation with PCV

- 4.6.a The state council may apply for or renounce PCV affiliation with any other organisation, as it deems appropriate. The State council can also allow any other horse associations or bodies as it deems appropriate to affiliate with PCV that in its opinion will compliment and better the pony club movement. These organizations could be but are not limited to Schools/Tafe, Any educational facility, Private riding schools, Competitions run by non-pony club members, HRCav, EA, Western Pleasure riders, Arab Society and any other body that the State Council deems to be appropriate providing all affiliated members comply with the rules and regulations laid down by PCV. These rules and regulations will be provided to the applicant upon application.

4.7 PCV Conference

- 4.7.a The state council may decide to hold a conference and if so:
- i. A conference may be held on the same day as the annual general meeting or at another time as the state council chooses.
 - ii. A conference may include all clubs at one conference or may be split into several conferences held in various zones.
 - iii. At a conference each pony club has one vote either by a nominated club delegate or by proxy.
 - iv. The state council president is the chairperson at a conference or, if he is absent, one of the council vice-presidents acts as chairperson. If the president and the vice-presidents are absent, the state council chooses one of its members to be the conference chairperson.
 - v. The state council, a zone or any member pony club may have business brought before a conference. The business must be notified in writing to the PCV state office at least six weeks prior to the date of a conference
 - vi. Any business arising at a conference is decided by a resolution put to the meeting and a simple majority vote by a show of hands. In the case of an equality of votes, the chairperson has the casting vote.
 - vii. A resolution put and carried at a conference is a recommendation only to the state council and must be considered by state council for adoption and application at the next state council meeting.
 - viii. If no business is received by the PCV state office in accordance with this rule, the state council or its executive may cancel a conference by giving notice not less than 21 days before a scheduled conference date to the clubs in writing and by electronic transmission if possible and by publicising on the PCV web site.

5 Zones

5.1 Zone Structure

- 5.1.a There are ten zones, which are more or less geographical in concept—Barwon, Central, East Gippsland, Midland, North Eastern, Northern Metropolitan, Northern, Southern Metropolitan, Wannon and West Gippsland. All zones must be incorporated under the Victorian Associations Incorporations Act 1981 (the Act).
- 5.1.b Zones must adhere to and operate within the PCV rules, directives of the state council and the Act.
- 5.1.c At its AGM, the zone must elect its office bearers, who hold office until the next AGM.
- 5.1.d The zone committee consists of:
- i. Two zone delegates from each pony club in the zone, who must not be Office Bearers of the Zone, to avoid potential conflicts of interest.
 - ii. Office bearers - President, Vice-president(s), Secretary and Treasurer. Other positions may be defined in the zone's rules of incorporation.

- iii. The zone representative, who must not be a zone delegate but must be a member of one of the pony clubs in the zone.
- 5.1.e In accordance with the PCV rules of incorporation, the clubs within each zone must elect a zone representative at the PCV AGM. The zone representative becomes a member of the state council.*[include vote for ZR into 5.1.c for 2 year term*
- 5.1.f Zone must hold meetings at regular intervals throughout the year to:
 - i. Receive business in accordance with rule 2.2.
 - ii. Co-ordinate club ideas and proposals.
 - iii. Assist member clubs to carry out the aims and objectives of the pony club movement.
- 5.1.g A zone committee may maintain by-laws that it ratifies in its minutes pertaining to specific aspects of zone policies and procedures that zone clubs and club members are required to follow. By-laws must not contravene, contradict or alter the intent of PCV rules or the zone's rules of incorporation. A by-laws guide is available from the PCV web site or state office.

5.2 Zone Fees and Levies

- 5.2.a Each zone may set an annual levy and/or fees payable by each club allocated to the zone.
- 5.2.b Each club within the zone must pay the levy and/or fees.
- 5.2.c The levy and/or fees must be determined in accordance with the zone rules of incorporation or if not specified, by the zone committee.
- 5.2.d The purpose of the levy and/or fees is to assist in funding the zone's expenses or projects.
- 5.2.e A club that does not pay its zone fees within the prescribed time may be disaffiliated, in accordance with rule 9.8.b.

5.3 Zone Representative

- 5.3.a The zone clubs elect their zone representative, who serves on the state council, in accordance with rule 5.1.e, and is also required to:
 - i. Strictly adhere to and apply PCV rules and state council directives.
 - ii. Act as a co-ordinator between the zone's clubs and state council, and work in close liaison with the state council, zone executive and committee, zone chief instructor, deputy chief instructors and zone assistants and the zone examining secretary. Including attending zone DCI/ZA meetings and appointing zone personnel to visit each club in the zone at least every 2 years.
 - iii. Represent the zone's pony clubs at state council meetings, state competitions and other state meetings.
 - iv. Appoint a competent XC course accreditor to inspect and approve horse trials course venues and set up within their zone in accordance with Horse Trials Rules B4.
 - v. Attend or appoint an appropriate nominee, to attend horse trials within the zone as required by the Horse Trials Rules B4.
 - vi. Attend activities and competitions as the zone representative deems necessary, to ensure compliance with the PCV rules.
 - vii. Ensure that the zone, clubs and club members within their zone operate in accordance with all current PCV rules and by-laws, and stipulate remedial or disciplinary measures when required. Provide a written report to the state council of any action taken to discipline clubs or club members. (Clubs, club members or zones complaining about or objecting to the disciplinary measures imposed by a zone representative, may lodge the complaint in writing, within 14 days, addressed to the PCV Chief Executive Officer at the state office).

- viii. Provide advice and guidance to clubs and assist with “best practice” management and the resolution of domestic problems and issues, with the assistance of the zone executive or its appointee(s) as required.
- ix. Check all competition, clinic and camp entry forms and programs to ensure that the minimum standards and venue/Club specific requirements are followed and provide an approval to the organising committee once satisfied. The minimum standards are in Competition Condition Inclusions available from the PCV web site or state office.
- x. Endorse nominations and entries of club members for all state, interstate and national occasions.
- xi. Appoint assistant(s), when necessary, to perform these duties.

5.4 Zone President

5.4.a The zone president is required to:

- i. Act as chairperson at zone meetings.
- ii. Promote the zone objective: “to co-ordinate clubs and assist them to carry out the objectives of the PCV.”

5.5 Zone Vice-President

5.5.a A zone vice-president is required to assist the president wherever possible and act as deputy in the president’s absence.

5.6 Zone Secretary

5.6.a The zone secretary is required to:

- i. Prepare the agenda for each zone meeting in consultation with the zone president and forward a copy to each club in the zone either in writing or by electronic transmission if agreed by both parties.
- ii. Attend each zone meeting, write and circulate the minutes to zone clubs and PCV as soon as possible after the meeting.
- iii. Maintain zone administration, correspondence and instructions directed by the zone meeting.
- iv. Fulfilling the duties in accordance with the current Incorporations Act including but not limited to:
 - lodging the annual statement via myCAV every year within one month after the annual general meeting.
 - notifying Consumer Affairs via myCAV when a new secretary is appointed and/or there is a change of secretary address or email address.

5.7 Zone Treasurer

5.7.a The zone treasurer is required to:

- i. Receive all monies and pay all zone committee-approved accounts.
- ii. Record the zone’s financial transactions and present a financial statement at each meeting.
- iii. Prepare an end-of-year financial statement for the AGM in accordance with the Act and the zone’s purposes and rules of incorporation.
- iv. Ensure the zone’s public officer forwards a copy of the financial statement and the appropriate forms to the Associations Incorporations office at the Department of Consumer Affairs Victoria, by the prescribed time.

5.8 Zone Chief Instructor (ZCI)

5.8.a The zone chief instructor, assisted by deputy chief instructors and zone assistants of the zone must:

- i. Follow the requirements set down in the current Pony Club Australia (PCA) Syllabus of Instruction, the PCA Manual of Instruction, PCA NCAS Syllabi and policies as determined by the state coaching director, in accordance with rule 4.3.
- ii. Assist with the implementation of programmes under the PCV Instructional Policy throughout the zone.
- iii. Facilitate the organisation of courses for coaching, proficiency test examiners and proficiency certificates, with a view to achieving uniformity in all aspects of teaching and examining within the zone.
- iv. Present a report at each zone meeting to keep the zone committee fully informed of all plans, progress and instructional policy information.
- v. Zone Chief Instructors must have current NCAS Level 1 accreditation.

5.8.b The zone chief instructor is appointed, in accordance with rule 5.11.

5.9 Zone DCI and ZA Panel

- 5.9.a The DCI and ZA Panel is a sub-committee of the zone and is responsible to the zone and, therefore, the PCV and must follow all directives given by the zone and PCV.
- 5.9.b The Zone appoints deputy chief instructors, in accordance with rule 5.13, and zone assistants in accordance with rule 5.14, to assist the zone chief instructor. DCIs, ZAs and the ZCI form a panel known as the zone DCI and ZA panel.
- 5.9.c All members of the DCI and ZA panel are eligible to vote at any panel meeting.
- 5.9.d The ZCI calls a minimum of two meetings per year of the DCI and ZA panel.
- 5.9.e The DCI and ZA panel is the instructional sub-committee of the zone. Any proposals to change policy or direction require ratification by the Zone and then the State Council.

5.10 Other Duties of the Zone DCI and ZA Panel

- 5.10.a Ensure each club in the zone, is visited by a DCI/ZA panel member at least every 2 years.
- 5.10.b Ensure that permanent and full attendance records of all instructors' courses are up to date.
- 5.10.c Maintain a current database of zone instructors and judges, so that organising committees and clubs may contact the ZCI for a referral to an instructor or judge.
- 5.10.d Record junior judges or examiners and provide opportunities to use them in an official capacity.
- 5.10.e Assist the ZCI with any courses.
- 5.10.f Assist with C*/K and B proficiency test assessments as requested by the ZCI.
- 5.10.g Ensure all zone clubs are aware of the proficiency test levels and the procedures for registering candidates and that all relevant matters are brought to their attention.
- 5.10.h Assist the PCV or zone in other matters that may reasonably be requested.
- 5.10.i Keep the PCV and the youth movement aims and objectives foremost in the minds of all involved.
- 5.10.j Report to the zone, in accordance with rule 5.9.e.

5.11 Zone Chief Instructor Appointment

- 5.11.a In June, the zone appoints its chief instructor as follows:
 - i. In April the PCV state office notifies the zone representative of the requirement to appoint a zone chief instructor, after which the DCI/ZA Panel or the Zone Executive nominate(s) a zone chief instructor.
 - ii. Before appointment, the zone executive must approve the nomination, which the state council ratifies at its first meeting in the financial year.
- 5.11.b The term of office for a zone chief instructor is one year. The ZCI may be reappointed.

5.12 Zone Chief Instructor Casual Vacancy

- 5.12.a The zone's DCIs and ZAs nominate, by a majority, a zone chief instructor to fill any casual vacancy for this position.
- 5.12.b Before appointment, the zone executive must approve the nomination.
- 5.12.c The appointment applies until the date on which the person who retired would have been eligible for reappointment.
- 5.12.d If the DCI/ZA panel does not nominate a candidate to fill any vacancy, the zone executive may nominate a person from within the panel or from the zone to fill the casual vacancy. This clause then follows 5.11.a.ii. If the Zone does not fill the casual vacancy, the State Council may nominate a person.

5.13 Deputy Chief Instructor Appointment

- 5.13.a In June the Zone re appoints its DCIs as follows:
 - i. In April the PCV office notifies the zone representative of the requirement to call for nominations and re nominations from the DCIs whose Three Year term has expired.
 - ii. The nominations must be submitted on an official nomination form issued by the PCV state office as follows;
 - A DCI of the zone in which the nominee is involved makes the nomination.
 - The nomination must be endorsed by two other DCIs. However, should the zone not have two other DCIs to endorse the nomination, the two most senior (in years of service) ZAs may endorse the nomination.
 - The Zone Executive may appoint a DCI.
 - The Zone Executive must approve the appointments.
- 5.13.b The term of office for a DCI is three years. A DCI may be reappointed.
- 5.13.c To be eligible for appointment as a DCI, a nominee must have worked regularly as a ZA for a minimum of one year and be prepared to carry out the duties of a DCI.
- 5.13.d To be eligible for re appointment a DCI must attend at least the following two update activities in every three year period of appointment.
 - i. The State DCI/ZA workshop.
 - ii. One PCV Clinic, this can be run by a Zone but must relate directly to PCV activities such as judging, course building, gear check.
- 5.13.e The nomination is submitted on an official nomination form issued by the PCV state office as follows:
 - i. A DCI of the zone in which the nominee is involved makes the nomination and the nomination form must be accompanied by a brief profile of the nominee.
 - ii. The nomination must be endorsed by two other DCIs. However, should the zone not have two other DCIs to endorse the nomination, the two most senior (in years of service) ZAs may endorse the nomination.
 - iii. The zone executive must approve the nomination and then send it to the PCV state office for submission to the CIP. The CIP must ratify the nomination before it is effective and before assigning the DCI to a zone or zones.

5.14 Zone Assistant Appointment

- 5.14.a In June the Zone re appoints its ZAs as follows:
 - i. In April the PCV office notifies the zone representative of the requirement to call for nominations and re nominations from the ZAs whose three year term has expired.
 - ii. The nominations must be submitted on an official nomination form issued by the PCV state office as follows:
 - A DCI of the zone in which the nominee is involved makes the nomination.
 - The Zone Executive may appoint a ZA.

- The Zone Executive must approve the appointments.
- 5.14.b The term of office for a ZA is three years. A ZA may be reappointed.
- 5.14.c To be eligible for appointment as a ZA, the nominee must have a good working knowledge of the pony club structure and policies and be prepared to carry out the duties of a ZA.
- 5.14.d To be eligible for re appointment a ZA must attend at least the following two update activities in every three year period of appointment.
 - i. The State DCI/ZA workshop.
 - ii. One PCV Clinic, this can be run by a Zone but must relate directly to PCV activities such as judging, course building, gear check.
- 5.14.e Nominations must only be submitted by a DCI of the zone in which the nominee is involved.
- 5.14.f A majority of the zone DCI and ZA panel must approve the nomination and then submit it to the zone executive for ratification before the appointment is effective.

5.15 Zone Examining Secretary (ZES)

- 5.15.a The term of office for a ZES is one year. The ZES may be reappointed. Each zone appoints a ZES at its AGM.
- 5.15.b The ZES is responsible for all matters relating to the organisation and registration of proficiency tests within the zone.
- 5.15.c Refer to rule 41 for information on proficiency test certificates.
- 5.15.d The ZES must ensure all zone clubs and prospective proficiency test candidates know the closing date for zone proficiency tests applications at zone and state levels.
- 5.15.e PCV guidelines for duties of a zone examining secretary are available from the PCV web site or state office.

5.16 Zone Junior Committee

- 5.16.a A Zone may form a Junior Committee using criteria similar to rule 6.14.

6 Pony Clubs

6.1 Relationship to PCV

- 6.1.a Pony clubs affiliated with the PCV and members of these clubs are the members of PCV subject to:
 - i. adherence to PCV rules,
 - ii. renewing PCV membership, (rule 6.2)
 - iii. paying fees (rule 9)and are extended PCV benefits in accordance with rule 10.7.
- 6.1.b Each pony club must belong to and be a financial member of one of the ten zones as allocated by the PCV, in accordance with rule 5.1.a.
- 6.1.c A pony club affiliated with the PCV must be incorporated under the current Victorian Incorporations Act, or equivalent state legislation, where the club is incorporated in another state, and have a Statement of Purposes and Rules of Incorporation, which have been approved by the relevant government authority.

Comment: Model rules for a pony club have been adapted from the Consumer Affairs model and are available from the PCV web site or state office.

- 6.1.d Clubs must adhere to and operate within the Act, PCV rules and directives of the state council and zone.

6.2 Club Renewal with PCV

- 6.2.a Each year clubs must submit a membership renewal application and pay the PCV club fee, in accordance with rule 9.

6.3 Club Committee

- 6.3.a The committee is required to:
- i. Administer all local activities and prepare a program based on the PCA Syllabus of Instruction, PCA Manual of Instruction and policies established by the CIP, in accordance with rule 4.4, and DCI and ZA Panel, in accordance with rule 5.9.e. If this is not followed, the club members are disadvantaged when they attempt the various levels of proficiency certificates.
 - ii. Ensure that the club carries out directions of the state council and the zone of which the club is a member.
 - iii. Maintain communication between the club and the zone.
 - iv. Ensure that the club holds at least eight club rallies each PCV year.
 - v. Make every effort to involve **senior** members and train them for future administration of the club. They should be encouraged to serve on sub-committees.
 - vi. If necessary, maintain by-laws of rules that it ratifies in its minutes pertaining to specific aspects of club policies and procedures that club members are required to follow. However, by-laws must not contravene, contradict or alter the intent of PCV rules or the club's rules of incorporation. A by-laws guide is available from the PCV web site or state office.
- 6.3.b The committee members should not make any substantial direct cash contributions towards the expenses of the club. The club raises all monies it uses by subscriptions or fund raising functions such as gymkhanas, social functions, competitions or any other means the committee may approve that fit within the PCV objectives.

6.4 Club President

- 6.4.a The president is responsible for chairing meetings and for generally promoting the aims and objectives of the pony club movement.

6.5 Club Vice-President

- 6.5.a A vice-president is required to assist the president wherever possible and act as deputy in the president's absence.

6.6 Club Secretary - Public Officer

- 6.6.a The secretary is responsible for:
- i. All secretarial and administrative matters of the club.
 - ii. Attending all meetings and recording minutes.
 - iii. Ensuring that decisions of the meeting are carried out.
 - iv. Making available to the committee all minutes of meetings, balance sheets, and circulars forwarded from PCV or the zone.
 - v. Maintaining a file system of all PCV and zone correspondence, which is to be made available to any club member for perusal.
 - vi. In consultation with the president, preparing an agenda for club meetings and circulating to committee members and, for the AGM, circulating to financial adult/**club** supporters, **seniors**, **adult riding members** and life members within the time prescribed by the club's rules.
 - vii. Maintaining a register of all members, defined in rule 13.5, in accordance with the Act.
 - viii. Fulfilling the duties in accordance with the current Incorporations Act including but not limited to:

- lodging the annual statement via myCAV every year within one month after the annual general meeting.
- notifying Consumer Affairs via myCAV when a new secretary is appointed and /or there is a change of secretary address or email address
- ix. Maintaining an attendance register for club rallies, activities, working bees etc. in accordance with rule 18.2, in conjunction with the DC and card secretary, if appointed.
- x. Updating their club records in the association database each year and to advise the zone secretary and zone representative even if the same people are reappointed.

6.7 Club Treasurer

6.7.a The treasurer is responsible for:

- i. All financial matters of the club, including receiving of monies, banking, paying approved accounts, properly recording financial transactions of the club and reporting on its financial affairs.
- ii. Presenting the statement of receipts and payments for the previous financial year to the club AGM, in accordance with the Act and the club's rules of incorporation.
- iii. Ensuring the club's public officer forwards a copy of the financial statement and the appropriate forms to the Associations Incorporations office at the Department of Consumer Affairs Victoria, or its equivalent in other states, by the prescribed time.

6.8 Incorporation Requirements

6.8.a The Secretary must diligently fulfil all of their specified duties, in accordance with the Act. Valuable information on the statutory requirements for incorporated associations can be found on the Consumer Affairs Victoria web site: www.consumer.vic.gov.au under the Business Names and Structures—Associated Incorporations section. The Frequently Asked Questions (FAQs) section also contains useful information.

6.9 Club District Commissioner (DC) Eligibility

6.9.a To be eligible for the appointment as a DC, the candidate must:

- i. Successfully complete a Working With Children check before commencing duties, in accordance with rule 8.
- ii. Not be a junior nor senior member of any affiliated pony club.
- iii. Be approved by the zone representative and then ratified by the zone executive before the applicant is appointed.
- iv. Not be a person who is financially interested in the letting out of horses or whose main source of income derives from instruction in equitation and/or dealing in horses.

6.10 Appointment of DC

- 6.10.a At the first meeting after its AGM, the club's committee appoints the DC, pending final approval by the zone representative and ratification by the zone executive, in accordance with rule 6.9.a.iii.
- 6.10.b If the appointment is not approved by the zone representative or not ratified by the zone executive, another DC must be appointed.
- 6.10.c The zone representative must notify the state council in writing, within 14 days, of a DC who is not approved by the zone representative or not ratified by the zone.
- 6.10.d On appointment, the DC automatically becomes a member of the club committee and remains in office, if ratified by the zone, until a new DC is appointed.
- 6.10.e The club must appoint an assistant DC to perform the DC's duties, except for signing of grading on the club member card, if the DC is
 - i. absent or

- ii. taking part in a mounted rally in which case the DC must also be an adult riding member of the club.
- 6.10.f The term of office of a DC is one year. The DC may be reappointed.
- 6.10.g The committee may rescind the appointment of the DC and reappoint another at any time by resolution of the club committee.
- 6.10.h The club secretary must update their club records in the association database each year and advise the zone secretary and zone representative, even if the same person has been reappointed.

6.11 Duties of DC

- 6.11.a The DC is the person responsible to the club for the running of the club rallies and activities, in accordance with rule 6.3.a. The DC:
 - i. Must have a clear understanding of the club's objectives to control the wellbeing of the club and help it achieve its goals and purposes.
 - ii. Is responsible for the smooth functioning and progress of the club rally, in accordance with rule 18.
 - iii. Must ensure rally programs are open to, and cater for, all club members.
 - iv. Must encourage the club member while tempering the aspirations of the over-ambitious parent, using tact, diplomacy and tolerance.
 - v. Sets a pattern of acceptable standards regarding the general behaviour of club members, maintaining respect of the club members toward all instructors and officials.
 - vi. Ensures horses are suitable and not abused, in accordance with rule 19.
 - vii. Ensures that horses and riders are graded correctly for their ability as a combination, regardless of size or age of the rider and horse, in accordance with rule 33.
 - viii. Ensures that club members' attendance details at rallies are kept current through the attendance register, in accordance with rule 18.2, and qualifying rallies are recorded correctly on the club member cards, in accordance with rule 15.
 - ix. Enters details for grading and signs accordingly in the appropriate section on the club member's card, in accordance with rules 15 and 33.
 - x. Must arrange the instructional program for rallies and activities, using:
 - The PCA Syllabus of Instruction, and other resources as recommended by PCA.
 - Policies established by the CIP, in accordance with rule 4.4.
 - Policies established by the zone DCI and ZA Panel, in accordance with rule 5.9.e.

Comment: DCs are encouraged to arrange an exchange of visits and ideas between clubs to facilitate:

- An exchange of senior and junior instructors, promoting the development of new techniques and experience.
- The sharing of interest and ideas.
- Promotion of friendship and furthering the aims of the pony club movement.

Comment: DCs who instruct at rallies in any capacity need to ensure they are a PCV coach member.

6.12 Club Chief Instructor (CCI)

- 6.12.a A club chief instructor is an optional appointment.
- 6.12.b A CCI must work in close liaison with the DC to arrange the instructional program for rallies and activities, using:
 - i. The PCA Syllabus of Instruction, the PCA Manual of Instruction and Horsemastership for the Australian Rider.
 - ii. Policies established by the CIP, in accordance with rule 4.4.

- iii. Policies established by the zone DCI and ZA Panel, in accordance with rule 5.9.e.

6.13 Club Instructors

- 6.13.a No club instructor (including parents) may instruct unless registered with the PCV and the conditions of the Working with Children Act have been met, in accordance with rule 8.
- 6.13.b Instructors and coaches are not permitted to mount a member's horse during the course of a club rally, activity or competition, in accordance with rule 19.2.e.
- 6.13.c Club instructors must work closely with the DC and CCI.
- 6.13.d Clubs must encourage instructors to undertake further education and attend instructors' courses.
- 6.13.e Club instructors must encourage the involvement of older pony club members as possible club instructors.

Comment: Refer coaching and instruction rule 40 for other information.

6.14 Junior Committee

- 6.14.a Clubs may form a junior committee made up of junior and senior members.
- 6.14.b A junior committee is a sub-committee of the club and is, therefore, answerable to the main club committee.
- 6.14.c One club committee member, other than the DC or an instructor, must be the liaison between the junior committee and the club committee.
- 6.14.d Junior committee members may have one or more delegates attend club committee meetings by invitation. These delegates do not have voting rights.
- 6.14.e The junior committee can undertake specific short-term projects to raise funds for the club or provide extra activities for club members, with the approval of the club committee.

6.15 Club Attendance Register

- 6.15.a A club attendance register is to be kept to record the attendance of all who attend a rally, activity and working bee. This includes riders, parents, coaches, and tradespeople undertaking repairs.
- 6.15.b Information collected should include but is not limited to; date, activity, name, mobile, horse/s. The associations database may be used to collect this information.

7 Forming a New Pony Club

7.1 Planning

- 7.1.a Anyone wishing to form a new pony club must adhere to these procedures and satisfactorily complete a period of probationary membership before applying for full affiliation with the PCV.
- 7.1.b To ensure smooth establishment of a club it is essential to:
 - i. Determine that there are sufficient adult supporters to form a committee and members (as defined in rule 13) to make forming a club viable and worthwhile.
 - ii. Find suitable club grounds and investigate a long term or permanent lease, keeping in mind the security of tenure if local municipal council or crown land is considered.
 - iii. Contact the PCV to find out to which zone the new club would be allocated, if it were successful in an application for full affiliation.
 - iv. Be sure that the potential committee members understand and can operate, in accordance with rule 6 and PCV rules.
 - v. Discuss the plans with a representative from the zone. The zone must provide advice and guidance where necessary to ensure the club is progressing in accordance with PCV requirements.

7.2 Public Meeting

- 7.2.a A public meeting must be held to formalise the plans. The meeting must be advertised in the local media stating its purpose and venue.
- 7.2.b Invite representatives from local municipal council and businesses to the meeting.
- 7.2.c The meeting must resolve to:
 - i. Form a pony club with the intention of becoming affiliated with the PCV.
 - ii. Name the club after the town or district in which the club will be located.
 - iii. Become incorporated, in accordance with rule 6.1.d.
 - iv. Form a committee with office bearers.
 - v. Apply for probationary membership with the PCV.

7.3 After the Public Meeting

- 7.3.a The club must be formed as resolved.
- 7.3.b The zone secretary and zone representative must be notified of the name, addresses and phone numbers of the elected office bearers and the DC when they are appointed.
- 7.3.c Have uniform approved by the zone committee, in accordance with rule 16. The uniform details must be submitted to the state council with the application for probationary membership
- 7.3.d The club must apply to the PCV through the zone **for probationary** membership. If the zone deems it appropriate, it will recommend the club to the state council.

7.4 Probationary Membership

- 7.4.a If granted by the PCV, the period **of probationary** membership will be not less than twelve months and not more than eighteen months.
- 7.4.b The only privilege this offers the club is indemnity under the PCV's current insurance policies
- 7.4.c Probationary clubs have the right to attend zone meetings and PCV conferences as observers, without voting rights.
- 7.4.d Probationary clubs are not permitted to conduct inter-club competitions.
- 7.4.e During the first six months of probationary membership, the club must organise and conduct a minimum of three rallies that cater for the interests of all its members, in accordance with rule 18.
- 7.4.f The executive of the zone where the club is located is responsible for ensuring that:
 - i. The club receives advice and guidance as needed and that it is progressing in accordance with PCV requirements.
 - ii. The PCV state office is advised of names and addresses of the office bearers of the club on probationary membership.
 - iii. A visiting zone official with a thorough knowledge of the rules and regulations of the PCV attends at least one of the three club rallies.
- 7.4.g The visiting zone official must be satisfied that:
 - i. The DC and other office bearers are conversant with the aims, objectives and rules of the PCV and are suitable for their roles.
 - ii. The DC and all office bearers are prepared to remain with the club for at least one year.
 - iii. The club follows the standard and type of instruction set out in the PCA Manual of Instruction. It is desirable that at least two instructors have attended an instructors' course prior to affiliation.
 - iv. The club adheres to the standard of discipline as set out in the PCA Manual of Instruction and complies with the rules of the PCV.
 - v. The site on which the rallies are held, and the equipment are suitable.

- vi. The club calendar has sufficient rallies and other activities to show that the motives of the club accord with the aims and objectives of the PCV.
 - vii. Formal minutes of meetings, a record of attendance of members and financial records are kept.
 - viii. The club has or will have sufficient funds to be able to carry out its obligations to its members.
 - ix. There are sufficient members to make the formation of a club viable and worthwhile.
 - x. The fees charged by the club for annual subscriptions are adequate to provide for the annual fees to the PCV and the zone, and to meet the club's financial requirements.
 - xi. The club is aware of the fact that it will be liable for mandatory annual fees, levies, subscriptions and insurance premiums to the PCV and the zone, in accordance with rule 9.
- 7.4.h As soon as possible after the visits at six and twelve months, the visiting zone official must present the zone executive with a written report of the findings.

7.5 Review at 6 Months

- 7.5.a The zone will review the Club's performance and adherence in accordance with rule 7.4.
- 7.5.b If ratified by the zone executive, the review report, in accordance with rule 7.4.h, must be forwarded to the state council. The state council considers the report for continued probationary membership.
- 7.5.c If granted by State Council, probationary membership is continued for a period of not less than six months and not more than twelve months. This is to enable the club to form a strong foundation and be thoroughly familiar with the aims, objectives and rules of the PCV.

7.6 Application for Full Affiliation

- 7.6.a A club may apply to the PCV through its zone for full affiliation, after satisfactorily completing twelve months of probationary membership.
- 7.6.b The application for full affiliation is sent to the zone executive who must then arrange for a DCI, ZA or another suitable person to be present at a rally.
- 7.6.c As soon as possible thereafter, the person from the zone must submit a written report on the club and conduct of the rally to the zone executive, which decides whether to ratify the application or recommend a further six months of probation.
- 7.6.d If ratified, the zone executive must forward the report and application together to the state council. The state council considers both the report and application for full affiliation
- 7.6.e If a further period of probation is recommended the zone executive must forward the report to State council. The club may reapply as per 7.6.a at the end of this further 6 months.

7.7 Full Affiliation

- 7.7.a If full affiliation is granted, full membership rights are immediately available to the new pony club, after the fees are paid, in accordance with rule 9.
- 7.7.b If affiliation is not granted, the club will have no right of appeal against the decision. However, if the reasons for the refusal are considered rectifiable, the state council will advise the club as to what is required before affiliation can be granted. When the club fulfils these requirements, it may reapply for full affiliation according to rule 7.6.

8 Working with Children Act

8.1 Policy

- 8.1.a It is the Policy of PCV and conditional upon membership to PCV that the following categories must obtain a Working with Children Check:
- i. Coaches, Instructors, volunteer coaches, employees and contractors.
- 8.1.b Before attending a rally or activity all coaches, instructors, volunteer coaches, employees and contractors. Coaches/instructors and volunteer coaches must obtain coach membership with PCV and provide current working with children card details to PCV before they can teach in any activity in pony club. Club committees and DC's must ensure that all coaches/instructors and volunteer coaches have current coach membership with PCV before they can teach in any activity in pony club. This rule also includes all EA coaches whether registered with EA or not.

8.2 Applicable Personnel

Categories of members who require to hold a Working with Children check are as follows:

- 8.2.a An adult supporter which category shall be deemed to include the following:
- i. Both parents of riders who regularly attend rallies
 - ii. A single parent who regularly attends rallies.
 - iii. A non parent guardian of a child either temporary or otherwise who regularly attends rallies.
 - iv. An honorary life member who regularly attends rallies and club activities.
 - v. Visiting members and adult supporting members as defined above from clubs other than the host club.
 - vi. A non member who does not fall within the categories listed above who regularly attends rallies and club activities.

For the purpose of definition in this sub clause "regular" and "regularly" shall be deemed to mean three or more times over a twelve month period. A "single parent" shall be deemed to be a person who is listed on the membership form of a member club as the primary carer.

- 8.2.b Riding members aged 18yrs and over.

8.3 Negative Notice

Any person who is required to obtain a WWCC and receives a negative notice, or declines to apply for a WWCC cannot officiate or attend at pony club rally or activity of any kind.

8.4 Procedure

- 8.4.a When applying for a working with children check, PCV of 73-75 Mackie Road Mulgrave must be nominated on the application form. Refer to the PCV web site or state office for full procedures and requirements for the Working with Children Act.

- 8.4.b Clubs must ensure that membership of their club is dependent upon a member (who is required to obtain a WWCC) produces to the club committee, /membership secretary within two months of joining a club their WWCC card. Clubs must advise prospective members that membership is conditional upon anyone who fits the category referred to in 8.2a obtaining a WWCC.
- 8.4.c Clubs must regularly check that all members, coaches/instructors and volunteers hold a current registration card from PCV and that their Working with Children Check has not expired.

9 Fees – PCV, Zones and Clubs

9.1 PCV Year

- 9.1.a The PCV financial year, also called the PCV year, is 1 July to 30 June.

- 9.1.b A club or zone financial year is not related to the PCV year and, therefore, may be different to the PCV year. However:
- i. A club membership year must be 1 January to 31 December to coincide with the PCV year.
 - ii. A club must collect fees in accordance with rule 9.6.

9.2 Membership of PCV and Renewal

- 9.2.a Clubs are the members of PCV and:
- i. Must apply to renew membership each year, in accordance with rule 6.2
 - ii. Pay the club member fee, in accordance with rule 9.3.
- 9.2.b Members of each pony club must renew membership of the club, in accordance with rule 13.3.

9.3 PCV Annual Fees and Registration

- 9.3.a At its November state council meeting the PCV prescribes annual fees applicable to zones and clubs affiliated with the PCV, which must be paid by the due date.
- 9.3.b The annual PCV fees are:
- i. PCV club fee: paid by each club annually
 - ii. PCV zone fee: paid by each zone annually
 - iii. PCV club member fee: paid by clubs for each of its club members accordance with rule 10
- 9.3.c Non-payment of any of these fees by the due dates in rule 9.4, will result in disaffiliation or penalties, in accordance with rule 9.8.
- 9.3.d A club must register its club members and other club personnel with the PCV, in accordance with rule 11.

9.4 Due Dates for PCV Fees

- 9.4.a All fees must be received at the PCV state office at a date determined from time to time by State Council.
- i. PCV club fee: Club Affiliation is due on the date as advised each year
 - ii. PCV zone fee: Zones need to pay on invoice, payment terms are stated on the invoice
 - iii. PCV Club member fee: as per the schedule in rule 10.5. Members should be paid up before they attend a rally or activity.

9.5 Zone Direct Fees

- 9.5.a Fees are payable by each club to the zone that the club belongs to, in accordance with rule 5.2.
- 9.5.b The zone determines and levies this fee directly to clubs and sets the due date.

9.6 Club Direct Fees

- 9.6.a Each club determines annual fees payable by its members who are defined in rule 13.
- 9.6.b Either adult supporters must pay a nominal annual fee or the club may deem them to be financial without a fee.
- 9.6.c The fees charged by a Club are due and payable as specified in the club's rules of incorporation, minutes or by-laws. However:
- i. From the fees collected, the club must pay its PCV club fee and PCV club member fees by the due dates.
- 9.6.d If a club member fails to lodge a renewal application for membership, pay the club fees and be accepted by the club committee, the club member ceases to be a club member at the end of the membership year and forfeits all PCV benefits.
- 9.6.e Clubs are financially self-supporting. Fees must therefore cover:

- i. PCV and zone fees.
- ii. The conduct of club operations, activities and equipment purchase.
- iii. Recommended: a provision for insurance “excess” contingency.

9.7 Debtor Clubs and Zones

- 9.7.a A club or zone has a maximum of 7 days credit with the PCV.
- 9.7.b Any club or zone, exceeding the 30 day limit, will immediately forfeit its credit rating and, for the following 12 months, must pay in advance.

9.8 Penalties for Non-Payment or Non-Compliance

- 9.8.a The PCV may refuse to issue a club member card in accordance with rule 10.6 until a club has fully satisfied its obligations.
Examples include:
 - i. Outstanding debts to PCV and/or zone
 - ii. Non-compliance with PCV and/or zone rules, regulations or directives
 - iii. Non-compliance with current statutory requirements of the Victorian Associations Incorporations Act.
- 9.8.b A club or zone may be disaffiliated for non-payment of fees within the prescribed time to either the PCV or the zone to which they belong.
- 9.8.c Disaffiliated clubs and their members lose all PCV club membership privileges and insurance indemnity.

9.9 Club Re-affiliation after Payment of Fees

- 9.9.a Any club or zone disaffiliated for non-payment of PCV or zone fees by the due date is automatically re-affiliated upon payment of due fees plus any prescribed penalties set by state council.

10 PCV Club Member Fee Requirements

10.1 Primary Requirement

- 10.1.a Clubs must pay a PCV club member fee for all club members specified in rule 10.3.
- 10.1.b Non-payment of fees by the due date will result in disaffiliation or penalties in accordance with rule 9.8.

10.2 Eligibility before Payment and Riding

- 10.2.a Clubs must ensure new and renewing club members (refer to definitions 13.12 and 13.13) satisfy the conditions in rule 11. Until those conditions are fulfilled:
 - i. The club member must not be permitted to participate at a rally, activity or competition.
 - ii. The club member must not be registered with the PCV.
 - iii. The club must not remit the PCV club member fee to PCV.
- 10.2.b PCV benefits (refer to rule 10.7) for existing club members cease at **end of membership year**, in accordance with rule 9.6.d, if:
 - i. application conditions have not been satisfied as a renewing club member, in accordance with rule 11 **and/or**
 - ii. fees and **membership** have not been paid and completed with PCV, in accordance with rule 10.5.

10.3 Applicable Categories for PCV Club Member Fee

- 10.3.a The club member fee applies to each person, new or renewing (refer to definitions 13.12 and 13.13), as a:
 - i. Junior member.
 - ii. **Senior** member.

- iii. Ready2Ride ‘Rookies’
- iv. Adult Riding member.

10.4 PCV Club Member Fees

10.4.a The PCV club member fee applicable to junior, senior and adult riding members is paid as either a full or a pro-rata fee as follows:

Full fee	For the ensuing PCV year commencing 1 January or, thereafter, for those admitted as a club member before 1 September. The full fee encompasses the Membership Renewal period and current year period in rule 10.5
Pro-rata fee	For club members admitted between 1 July and 31 December inclusive

10.4.b Fees received by PCV are non-refundable & non-transferable. However fees paid online are pending until Clubs & PCV fully accept memberships or transfers. If membership is declined then no payment will proceed

10.5 Due Date of Registration and Payment

10.5.a The state office must receive a PCV club member fee for each junior, senior and adult riding member. Club administrators must set up their club membership in MyPonyClub prior to the commencement of the PCV membership year. Refer website for process.

10.6 PCV Issue of Club Member Card

10.6.a Upon registration with PCV of a junior, senior or adult riding member, in accordance with rule 11, PCV issues a club member card.

10.6.b Refer to rule 15 for specific conditions and requirements of club member cards.

10.7 PCV Benefit Entitlements

10.7.a Subject to adherence to PCV rules, the PCV extends to its clubs and all club members defined in rule 13:

- i. The benefits and use of the PCV structure and operations in accordance with its rules.
- ii. Insurance in accordance with rule 3.

10.7.b Entitlements to PCV benefits cease at the end of the membership year, in accordance with rule 9.6.d, for:

- i. A club that has not paid its fees, in accordance with rule 9.3.
- ii. A club member, not renewed as a club member with conditions satisfied, in accordance with rule 11, or with fees not paid in the strength return period, described in rule 10.5.

11 Eligibility and Registration of Club Personnel with PCV

11.1 Why Registration is Required

11.1.a Registration and payment of fees when applicable, provides clubs and club members with PCV benefits, in accordance with rule 10.7:

- i. Insurance, described in rule 3.
- ii. Issue of club member cards, in accordance with rule 10.6.
- iii. Other requirements necessary to enable the PCV to administer its operations.

11.2 Procedure Required before Registration

11.2.a Each year clubs and club members must complete the procedure detailed in rule 13.3, as annual renewal is not an automatic right.

11.2.b If a membership is not going to be renewed or if a member is being expelled, the grievance procedure in Rule 14 must be followed. Membership is based upon individual

applications and each person must be treated as a separate entity. It is not acceptable to combine family units when dealing with grievance or expulsion processes.

11.3 Who Must be Registered

- 11.3.a Clubs must register the following club personnel with the PCV on or before the applicable due date, in accordance with rule 10.5 or immediately they become involved in a club:
- i. Junior members.
 - ii. Senior members.
 - iii. Adult Riding members.
 - iv. Ready2Ride 'Rookies'.
 - v. Life Members.
 - vi. Adult/Club Supporters.
 - vii. Club Office Bearers.
- 11.3.b Registrations must be lodged with the PCV state office online with 'MyPonyClub' – Omnisport Management.

12 Club Recession or Winding Up

12.1 Recession

- 12.1.a The zone executive must place in recession a club that runs less than the compulsory eight official rallies within 12 months or has insufficient club members, in accordance with the current Victorian Associations Incorporations Act.
- 12.1.b A club may voluntarily go into recession due to lack of financial or club membership viability.
- 12.1.c Clubs may make application to re affiliate with PCV during the first 12 months of recession.
- 12.1.d The zone executive may grant full affiliation during the first 12 months of recession after a satisfactory official club visit at a working rally.
- 12.1.e Any club in recession for more than 12 months will be disaffiliated and wound up, in accordance with rule 12.2.

12.2 Club Winding Up

- 12.2.a A pony club may wind up by means of a special resolution passed at a club general meeting duly convened to do so, such intention being clearly set out in the notice convening such a meeting.
- 12.2.b Upon such a resolution being passed, all the property and assets of the pony club must be disposed of, with approval of the Registrar of the relevant state government associations' office:
- i. To another pony club or zone affiliated with the PCV.
 - ii. This other club or zone is selected at the last meeting of the pony club.
 - iii. If the club fails to select another club or zone, the PCV will make the selection.

Handbook of BYLAWS (Rules 13-43)

*Effective
Jan 1, 2025*



PONY CLUB
VICTORIA

FOREWORD

There are thousands of pony club members participating in PCV ranging from the new to the experienced. Within this environment, achieving the aims of this book is an essential ingredient to creating harmony and fulfilment within a club, zone and at competitions.

Therefore, the continuing education of both new and experienced club members in all PCV rules is necessary. Experienced club members should not rely on memory and new club members should not remain ignorant. Pony Club Victoria asks all clubs and zones to promote actively the need to become very familiar with these rules and for club members to undertake self-education.

AIMS OF THIS HANDBOOK

These rules:

- Allow uniformity and consistency of methodology within PCV between clubs and between zones.
- Provide a level playing field for competition.
- Minimise risk to our riding members, clubs and zones.

HANDBOOK DEFINITIONS

This handbook contains both Bylaws and comment and must be read in conjunction with all other rule books published by the PCV.

Bylaws are rules that the PCV Board has officially ratified. All club members, affiliated pony clubs and zones of the PCV must strictly follow and adhere to them.

All matters in this book are Bylaws unless specifically marked as Comment. Comment items are not rules but are designed to provide practical assistance, guidance and recommended procedures for clubs and zones.

In this handbook, the following definitions apply:

- "Act" means the Associations Incorporation Reform Act 2012 (Vic) or its equivalent in any other state where applicable.
- "Board" means the Board constituted under the Rules of Incorporation of PCV.
- "Club member" means a person who meets one of the definitions in rule 13.5.
- "PCV" means Pony Club Victoria Inc.
- "PCV Rules" means the Rules of Incorporation of PCV.
- "Pony club", "club", "member pony club" or "probationary pony club" means an organisation affiliated with the PCV.

Unless stated to the contrary, a reference in this handbook to a rule, in this handbook or elsewhere, refers to the rule and all its sub-clauses.

Unless otherwise specified, reference to a rule number means the rules within this handbook.

The singular includes the plural and vice versa; and words importing one gender include the other.

Some reference material noted in this book is available from the PCV web site; such material is also available from the PCV state office in a printed format. PCV may charge a fee for printed information.

PCV AIMS AND OBJECTIVES

- To encourage young people to ride and to learn to enjoy all approved types of sport connected with horse riding.
- To provide instruction in horsemanship, riding and the proper care of horses.
- To promote the highest ideals of sportsmanship, citizenship and loyalty, thereby cultivating strength of character and self-discipline.

Copyright

Copyright © 2024, Pony Club Victoria Inc (Inc Reg No. A0013413S). All rights reserved.

PCV affiliates have permission to reproduce all or part of this document to use when instructing PCV members or running competitions hosted by a zone or pony club.

Reproduction by any other organisation or individual, and for any other purpose, is prohibited, unless PCV has given prior written approval and received the appropriate fee, if any.



Contents

Abbreviations.....	5
13. Member Categories, Definitions and Procedures	6
14. Discipline for Misconduct.....	12
15. PCV Club Member Cards	13
16. Uniform.....	18
17. Official PCV Logos	19
18. Rallies.....	20
19. The Horse.....	26
20. Gear Check	30
21. Lungeing	30
22. Risk Management	30
23. First Aid and Equipment—Minimum Requirements.....	31
24. Fall of Rider and further participation in competition/activity	32
25. Vehicle Usage	33
26. Alcohol	34
27. Medication Control of Horse and/or Rider.....	34
28. Organising Committee Duties	35
29. Stabling, Yards & Tying up of Horses at Competitions/Rallies/Clinics/Activities	37
30. Open Sections, Activities and Competitions	37
31. Conduct at Activities and Competitions.....	38
32. Visiting Pony Club Officials at Competitions or Rallies.....	39
33. Grading	39
34. Eligibility for Pony Club Activities and Competitions	41
35. Queries and Protests.....	44
36. Activities and Competitions.....	45
37. State Level Pony Club Competitions	47
38. Separating Equality of Scores (Count Back)	50
39. National and International Pony Club Activities or Competitions.....	52
40. Coaching and Instruction	53
41. Proficiency Tests and Certificates.....	55
42. Awards	56
43. Code of Conduct for the Welfare of the Horse	58

Abbreviations

Throughout this handbook there are some abbreviations often used within pony club:

Abbreviation	Term	Abbreviation	Term
CCI	Club Chief Instructor	NCAS	National Coaching Accreditation Scheme
CIP	State Chief Instructors' Panel	PCA	Pony Club Australia LTD.
DAP	Disability Action Plan	PCV	Pony Club Victoria Inc.
DC	District Commissioner	RWH	Riders Without Horses
DCI	Deputy Chief Instructor	ZA	Zone Assistant
EA	Equestrian Australia	ZCI	Zone Chief Instructor
EV	Equestrian Victoria	ZES	Zone Examining Secretary
FEI	Fédération Equestre Internationale		
HC	Hors Concours		

13. *Member Categories, Definitions and Procedures*

13.1 **Member Relationship to PCV**

- 13.1.a Members of clubs affiliated with PCV are members of PCV and receive PCV benefits, in accordance with Rule 10.7.

13.2 **Membership Year**

- 13.2.a The PCV membership year is from 1 January to 31 December.
- 13.2.b *A club membership year must be 1 January to 31 December to coincide with the PCV membership year. However, the club financial year may be different, in accordance with Rule 9.1.b.
- 13.2.c Club members and personnel must be registered with the PCV in accordance with Rule 11.
- *Clubs will need to check their constitutions comply. If a club constitution needs to be changed suggested wording Club membership to coincide with the PCV membership year

13.3 **Application and Renewal Procedure for Club Members**

- 13.3.a Joining and annual renewal of club membership is not an automatic right and before registering a club member with PCV this procedure must be completed.
- 13.3.b To be eligible, the following applicants must apply for club membership with the applicable pony club each year:
- i. New club members (not a club member last PCV year).
 - ii. Existing club members who wish to renew.
 - iii. Refer to Rules 13.5, 13.12 and 13.13 for club member categories and definitions. Refer to PCV website for fees and due dates.
- 13.3.c To be entitled to PCV benefits and registration, each applicant must complete the following process:
- i. Applicants must apply online via link on PCV website or submit Club paper application form to Club (if necessary) and pay the club's prescribed fee, in accordance with Rule 10.2. Adult/Club supporters may not need to pay a fee in accordance with Rule 9.6.b

Comment: Online procedure via PCV Website: Select [PCA.JustGo](#) > member login> state > club >member category and then complete personal details etc.

- ii. Applicants must accept the PCV and club Code of Conduct.

13.3.d The club must consider each application.

- i. If the committee approves the application, the club must inform the successful applicant of their acceptance as a club member and confirm membership with PCV via online process. The applicant must not ride at a rally until the committee has approved the application and received the fees. The applicant must not ride at an activity or competition until registered with PCV and has a PCV-issued club member card.
- ii. If the committee declines the application, the club must inform the applicant in writing within 28 days of the committee meeting, in accordance with the Associations Incorporation Act. Fees paid online will be held pending until Clubs & PCV fully accept memberships or transfers. If membership is declined then no payment will proceed. If a membership is not going to be renewed or if a member is being expelled, the grievance procedure in Rule 14 must be followed. Membership is based upon individual applications and each person must be treated as a separate entity. It is not acceptable to combine family units when dealing with grievance or expulsion processes.

Comment: Registration of club personnel with PCV is required for insurance, in accordance with Rule 11.1.a.

13.3.e The date on which a new riding member joined the club must be recorded in the “change of status” section of the club member card, in accordance with Rule 15.4.h.

13.3.f Details of all club members and personnel must be recorded in the club members’ register, in accordance with Rule 6.6.a.vii

Renewal of club membership and access to PCV benefits is not an automatic right. Figure 3 summarises what is required of all clubs and club members, each year.

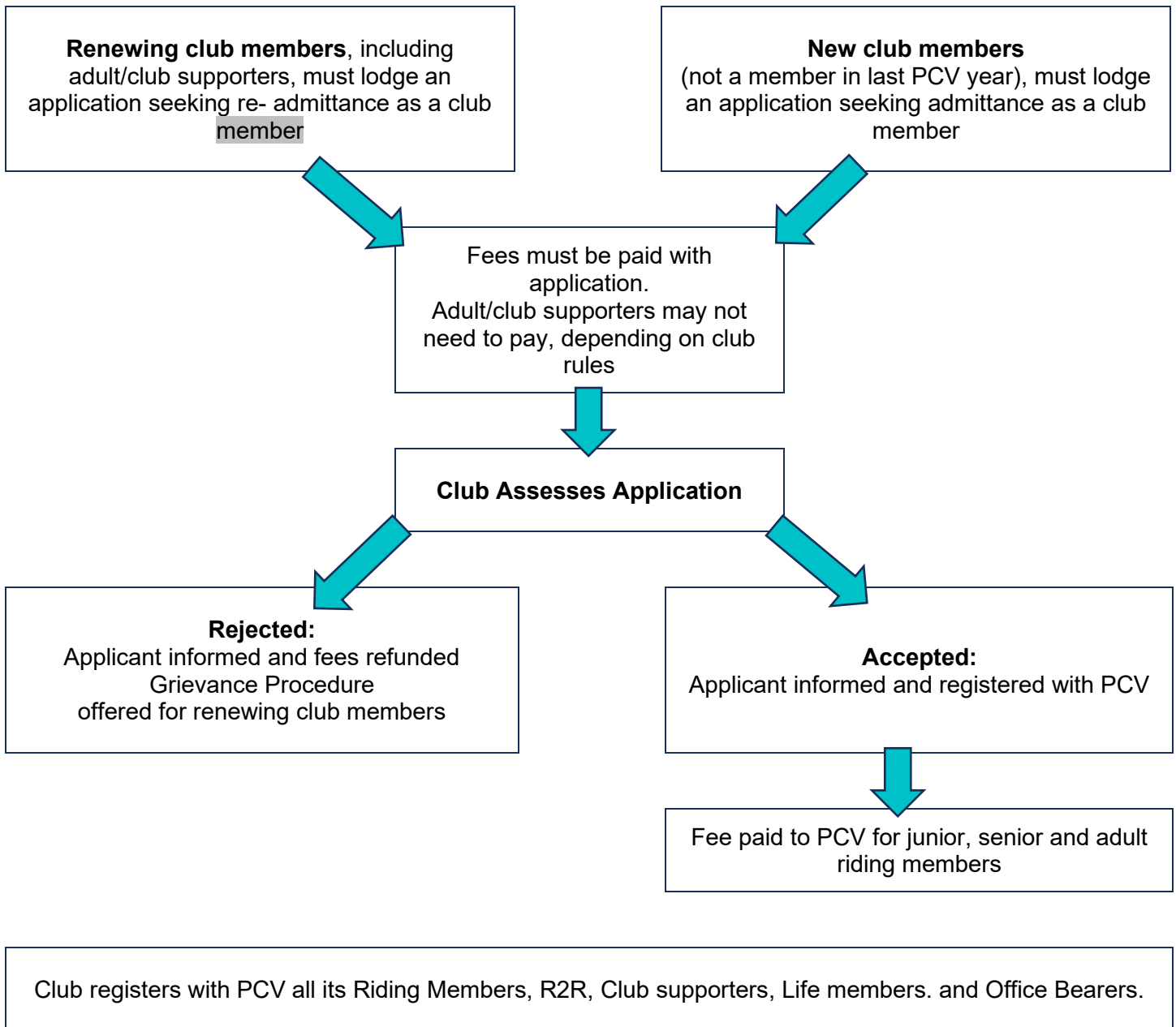


Figure 3. PCV renewal and registration process

13.4 Application Form for New and Renewing Club Members

- 13.4.a A parent or a legal guardian must sign the application form/accept agreement online for an applicant under age 18 years.
- 13.4.b Applicants must apply online via link on PCV website or submit Club paper application form to Club (if necessary). This includes the Member declaration which contains the [Code of Conduct](#), horse health, event security and biosecurity information.
- 13.4.c The applicant may complete the optional medical history form at the club's discretion.
- 13.4.d The secretary must hold club membership details and medical history form at club level in a safe and secure place with controlled access, to maintain privacy.

13.5 Club Members

- 13.5.a Club members are one of:
 - i. Junior riding member.
 - ii. Senior riding member.
 - iii. Adult riding member.
 - iv. Ready2Ride 'Rookies' member.
 - v. Adult/Club supporter.
 - vi. Instructors and Coaches.
 - vii. Honorary life member (if the club's rules permit. Refer to Rule 42.4).
- 13.5.b A junior, senior, Ready2Ride or adult riding member must not be a member of more than one pony club affiliated with the PCV.
- 13.5.c Club member's benefits with PCV and membership of the pony club they belong to, cease:
 - i. On 31 December, unless the club member lodges a renewal of club membership, pays the club fees and is accepted by the club committee, in accordance with Rule 9.6.d.
 - ii. When the club member tenders a written resignation to the club secretary.
 - iii. Under other conditions defined in the club's Rules of Incorporation or current Victorian Associations Incorporations Act.
- 13.5.d Any club member under the age of 18 must have the written permission of a parent or legal guardian to join the club.
- 13.5.e The club secretary must maintain a club members' register, in accordance with Rule 6.6.a.viii.

13.6 Junior Riding Member

- 13.6.a A junior riding member is one under the age of 18 years.

13.7 Senior Riding Member

- 13.7.a A senior riding member is one aged 18 years and over.

-
- 13.7.b A senior member may continue membership of their club and receive PCV benefits until end of membership year following their twenty-fifth birthday.

13.8 Adult Riding Member

- 13.8.a An adult riding member is one aged over 25 and under 80 years of age where clubs have this membership category.

13.9 Ready2Ride ‘Rookie’

- 13.9.a A Ready2Ride ‘Rookie’ member is one aged 10 years and under, where clubs have this membership category.
- 13.9.b Rookies can leave the program at any time to upgrade their membership and attend a full day rally. An upgrade to a junior membership would require the Rookie to pay the difference in the fees at that given time.
- 13.9.c Rookies are not eligible for graded competitions.

13.10 Adult/Club Supporter

- 13.10.a An adult/club supporter is a person aged 18 years or over, who has an interest in the welfare of the club and who is not a senior member of a pony club.
- 13.10.b It is the prerogative of the individual pony club to decide its own policy as to how adult/club supporter status is achieved.
- 13.10.c The club must clearly define its policy on adult/club supporter status and record the policy in the club’s minute book, with [PCV Handbook of Bylaws](#) or Rules of Incorporation.
- 13.10.d An adult/club supporter must be financial with the pony club to be eligible for election to the club committee. However, the club may deem adult/club supporters to be financial without payment of a fee, if the clubs’ rules permit, in accordance with Rule 9.6.b.
- 13.10.e Clubs must record all adult/club supporters as club members in the club members’ register, in accordance with Rule 6.6.a.vii, and register them with the PCV, in accordance with Rule 11.

13.11 Instructor/Coach

- 13.11.a An instructor/coach who is not a parent or adult/club supporter in the club in which they are coaching will have no voting rights in the club.
- 13.11.b Clubs must hold a record of all instructors/coaches and volunteers at each club activity and register them with PCV in accordance with Rule 11.

13.12 Riders Without Horses Program

- 13.12.a Riders Without Horses is not a separate club member category. Clubs may establish a program referred to as Riders Without Horses.

13.13 State Disability Action Plan (DAP) for Club Members

- 13.13.a The DAP, under the Sports CONNECT umbrella, recognises our inclusive policies. Club members assessed under this system may gain exemptions from some rules or use modified equipment. The state coaching director will record these exemptions on the club member card.

13.14 New Club Member

- 13.14.a A new club member is one who has not been a club member in the current year or within the previous PCV year (1 January - 31 December).

13.15 Renewing Club Member

- 13.15.a A renewing club member is either:
- i. A current member of a pony club affiliated with the PCV, reapplying to continue club membership in the ensuing PCV year.
 - ii. A member of a pony club in the previous PCV year, who failed to renew by 1 January but subsequently applies for club membership during the current PCV year.
- 13.15.b Renewal is not an automatic right, in accordance with Rule 11.2, and the correct procedure for renewal must be followed.
- 13.15.c For the period from 1 January until renewal procedure is completed, and the due fee is paid to the club, the individual concerned ceases to be a club member and no PCV entitlements exist, which means:
- i. No rally attendance.
 - ii. No competition in a pony club section.
 - iii. No competition in an open section, unless the day participation form is signed and fee is paid.
 - iv. No insurance benefits.

13.16 Transferring Club Member

- 13.16.a A club member wishing to resign from an affiliated pony club to join another must undergo a transfer if the club member is either:
- i. a current club member in the current membership year (1 January- 31 December) or
 - ii. not a club member in the current membership year but was a club member in the preceding membership year.

13.17 Transfer Procedure

- 13.17.a In the transfer procedure, the club member's current club is called the "transferring club" and the club to which the club member wishes to transfer is called the "new club."
- 13.17.b Transfers are processed online PCV website. For more information contact the PCV office.

-
- 13.17.c The club member must pay all money owing to the transferring club, unless it agrees to waive the debt.
 - 13.17.d If the transferring club refuses, or has not attended to, the transfer application within 14 days of lodgment, the transferring club member may make application to the zone representative. All parties must abide by the zone representative's directives.
 - 13.17.e Once any debt has been paid or waived, the transferring club must ensure the following is completed within 14 days:
 - i. Ensure that the member's card is fully and accurately completed.
 - ii. Hand the member's card to the member or, if requested by the member, directly to the new club.
 - 13.17.f When the new club approves the transfer and application for club membership:
 - i. The club must confirm transfer with PCV via website.
 - ii. The DC, secretary or card secretary must strike out, with a single line, the old club's signatures on the club member details page of the card and record the new club's signatures/initials, in accordance with Rules 15.3 and 15.5. The struck-out signatures must remain legible for verification purposes.
 - iii. The new club must record the transfer date on the card and club attendance book at the first rally attended by the club member.
 - 13.17.g The club member's rally attendance is ongoing and cumulative between the transferring club and the new club.

14. *Discipline for Misconduct*

- 14.1.a Refer to Rules of Incorporation.

15. PCV Club Member Cards

15.1 Policy

- 15.1.a A numbered club member card must be issued to eligible club members in accordance with Rule 10.6.
- 15.1.b The club member card must not be the sole attendance record. Clubs must also maintain attendance records in the club register in accordance with Rule 18.2.
- 15.1.c An issued club member card proves that:
 - i. The club member is a financial member of a pony club affiliated with PCV
 - ii. The PCV club member fee has been paid by a club to PCV or will be paid within the 30-day credit provision, according to the schedule in Rule 10.5 for that PCV year.
 - iii. The club member is entitled to PCV benefits in accordance with Rule 10.7.
- 15.1.d The club member card also establishes whether a club member is eligible to compete, in a pony club section, accordance with Rule 34.
- 15.1.e Under normal circumstances, the PCV state office will issue a club member card within 14 days of receiving the club registration.
- 15.1.f The issue of a club member card may be refused in accordance with Rule 9.8.

15.2 No Card Means No Competition and No Verification

- 15.2.a A club member who has not been issued with a PCV club member card for the current PCV year, must not compete in any competition hosted or organised by a PCV affiliated pony club until issued with a club member card.
- 15.2.b A verification form must not be used if a PCV club member card has not been issued for the current PCV year. These forms are only for use in the situation of a lost or damaged card until it is replaced. Refer to Rule 15.8 regarding verification forms.
- 15.2.c A club member card establishes that the holder is a current PCV club member and is indemnified by the PCV's insurance, in accordance with Rule 3. This includes the virtual membership card on the Pony Club Australia app.

15.3 Procedure when Issued

- 15.3.a Upon receiving a club member card from the PCV state office, clubs must:
 - i. Immediately check the correctness of all club member details printed on the card, including date of birth and certificates. Advise the state office immediately if any information is incorrect, for reissue of the details. Only the PCV state office may correct the printed club member's details.
 - ii. The card numbers for the current and previous years must be recorded in the club attendance register, in accordance with Rule 18.2, so they can be quoted on any insurance claim, or when seeking a replacement for a lost or damaged card

- iii. Complete the card details as required for card maintenance.

15.4 Card Maintenance

- 15.4.a Club member cards must be maintained for all members when granted a qualifying attendance at a rally under the conditions of Rule 18.
- 15.4.b If RWH attendance is recorded on the club member card, it must be recorded as “RWH” (refer to Rule 18.14.h.ii for other details).
- 15.4.c The cards must be fully and legibly completed as soon as possible at or after each rally, as described in the **Club Member Card Guidelines**, available from the PCV website.
- 15.4.d If a club member is unmounted at or absent from a rally, this must be recorded in the club attendance register and on the card under the “mount” column. Record absence as “ABSENT” and unmounted as “UM” or “Unmounted.” Refer to Rule 18.13 for more details regarding unmounted rallies.
- 15.4.e The DC is the only person permitted to sign the grading of a combination. Current, relevant gradings to be carried forward to new cards including the original grading date.
- 15.4.f Only the DC, secretary, or a card secretary appointed by the club, is permitted to complete the balance of a club member card.
- 15.4.g The signatures or initials recorded by the DC, secretary or card secretary on the club member’s details page of a club member card are to be used throughout the card. No other signature or initials other than those on the club member’s details page must be used.
- 15.4.h New date: The date a new club member joined in the current PCV year must be recorded on the club member card.
- 15.4.i Transfer date: Once a club member has transferred, in accordance with Rule 13.15, a transfer date must be recorded on the club member card at the first rally day with the new club.
- 15.4.j If a club member visits another club, attendance details must only be granted and recorded, in accordance with Rule 18.12.

15.5 Competition Requirements for Club Member Cards

- 15.5.a RWH attendance may be marked on a club member card. However, these club member card rules for competitions do not apply to club members participating in a RWH program. RWH members are not permitted to compete in a pony club section of a competition, in accordance with Rule 18.14.h.
- 15.5.b Club members who have not been issued with a club member card in the current PCV year must not ride at a competition and a verification form must not be used in accordance with Rule 15.2.

- 15.5.c Riders must present their current club member card (or verification form if applicable see Bylaw 15.8) at the event secretary's office at all pony club competitions for inspection by the card inspector prior to riding. Failure to do so will result in elimination. Riders must also present their previous year's club member card if this is needed to prove attendance requirements in the 12 months prior to a competition. These are the only two cards to be kept in the PCV official cover. Failure to do so will result in elimination. Photocopies of cards are not permitted.
- 15.5.d Riders should check their club member card prior to the competition to ensure it correctly states the information required to prove eligibility and grading, in accordance with Rule 15.6.
- i. Eligibility requirements, in accordance with Rule 34, must be proved.
- 15.5.e Corrections and amendments must only be made as described in Rule 15.7.
- 15.5.f If a rider cannot present a lost or damaged card, verification of eligibility may be undertaken by completing a verification form in accordance with Rule 15.8.
- 15.5.g A rider who does not satisfy these conditions must be disqualified from the competition, in accordance with Rule 15.9.

15.6 Competition Check List for Club Member Cards

- 15.6.a Full details of requirements are in Rules 15 and 34.
- 15.6.b A club member card (photocopies are not permitted) must prove the following information at a competition or activity other than a rally or instructional activity:
- i. PCV club member number (refer to Rule 15.3).
- ii. Correct name, address, and age (refer to Rule 15.3).
- iii. Mount (both paddock name and competition name) with corresponding initials throughout the card for each mount used.
- iv. Correct signatures or initials of the DC, secretary, and card secretary if applicable, must be recorded on the members details page and must be the same throughout.
- v. **Transfers:** old signatures must be crossed out with a single line and new signatures or initials entered (refer to Rule 13.15h).
- vi. **New club member or transfer:** correct date (refer to Rules 15.4.h and 15.4.i).
- vii. Attendance:
- **Ready2Ride:** two mounted rallies by the combination within the preceding 12 months of the competition.
 - **Junior riding:** two mounted rallies by the combination within the preceding 12 months of the competition.
 - **Senior riding:** two mounted rallies by the combination within the preceding 12 months of the competition.
 - **Adult riding:** two mounted rallies by the combination within the preceding 12 months of the competition.

Comment: RWH do not qualify to ride in a pony club section of a competition.

- viii. Last year's card must also be presented if needed to prove attendance in the preceding 12 months (refer to Rule 15.5.c.).
 - ix. Correct grading for the competition (refer to Rule 33). Also note that grading must not be amended at the competition (refer to Rule 15.7.a.ii).
 - x. Correctly completed special exemption, Project CONNECT and/or state qualification information, if applicable (refer to Rules 13.11 and 18.11).
- 15.6.c Members with cards that have blank rally information must not be penalised unless the absence of information results in unproven attendance requirements (refer to Rule 15.9.b).

15.7 Corrections and Amendments to Club Member Cards

- 15.7.a Amending or correcting club member cards:
- i. Only the DC, club secretary or club card secretary may amend or correct it.
 - ii. Grading must not be corrected or altered at a competition.
 - iii. Errors must have a neat single line drawn through them, with the correction neatly inserted and signed or initialled. The struck-out information must remain legible.
 - iv. Correction fluid or tape is not permitted.
 - v. Corrections must be legible.
 - vi. PCV state office corrections, in accordance with Rule 15.3, also apply.

15.8 Club Membership Verification

- 15.8.a A club member who cannot present their club member card(s) at a competition due to loss or damage, must fully complete a PCV club membership verification form and submit it to the organising committee's card inspector at the competition. However:
- i. Verification forms must not be used for club members who have not been issued a PCV club member card for the current PCV year.
 - ii. The virtual membership card on the PonyClub Australia app will be considered valid for Open competitions or activities not requiring grading or attendance criteria.
- 15.8.b It is not the organising committee's responsibility to provide verification forms. Clubs and club members may obtain forms from the PCV web site or state office.
- 15.8.c Only the club member's DC, secretary or card secretary may provide the verification information. However, they are under no obligation to do so.
- 15.8.d DCs, secretaries and card secretaries are required to limit verification of club members to unavoidable and rare occasions arising from lost or damaged card. Cards must be replaced, in accordance with Rule 15.10. The zone representative may deny use of the verification form if the zone representative deems it inappropriate, due to lack of good reason or effort on the part of the club member to present their club member card.
- 15.8.e If the information on the verification form is not fully completed and/or does not meet all of the eligibility requirements of Rule 33, the club member must not ride.

-
- 15.8.f The organising committee must forward every verification form accepted at a competition to the club member's zone representative at, or within seven days of, the completion of the competition.
- 15.8.g Upon receiving the form, the zone representative:
- i. May contact the club to ensure that the details given on the form were accurate and/or insist on receiving a copy of the club member's card or attendance register.
 - ii. May check that the club member is registered with PCV and a financial club member.
- 15.8.h The zone representative determines whether frequent use of the verification form by a club member will result in the club member's exclusion from the verification option.
- 15.8.i Any dishonest, misleading, or inappropriate use of the verification form will result in the zone representative suspending the club member from all competitions for a minimum of three months, in accordance with Rule 14.

15.9 Card Penalties

- 15.9.a The organising committee must enforce, without exception, disqualification from a competition of any rider whose club member card(s), on the day of the competition, are not presented, are inaccurate, are not correctable or are unverifiable. Such disqualification may only be imposed on the actual day of a competition for card infringements relating to that competition as follows:
- i. Breach of Rule 15.5.
 - ii. Eligibility as described in Rule 34 and others set down by specific competition rules, is not proved by the card.
- 15.9.b Details of rally attendances that are missing from the card are not penalised unless the missing information would be required to satisfy attendance eligibility, in accordance with Rules 34.5.
- 15.9.c Monetary fines are not permitted in lieu of card penalties.

15.10 Lost or Damaged Club Member Cards

- 15.10.a Current and previous year's club member cards that are lost, or damaged to an extent that they are illegible, must be replaced by application to the PCV state office through the member's club secretary.
- 15.10.b The club must apply for a replacement card within seven days of notification of its loss or damage.
- 15.10.c PCV will issue a replacement club member card, for which there is a fee.

16. Uniform

16.1 Requirements

- 16.1.a These uniform rules must be read in conjunction with the [PCA Gear Rules](#) – uniform section.
- 16.1.b All pony clubs must have an official uniform and club members must wear that uniform at any pony club competition or activity, in accordance with PCA Gear Rules.
- 16.1.c Open riders must comply with any standards in accordance with PCA Gear Rules as specified by an organising committee for a competition or activity.

16.2 Registration of Club Colours and Design

- 16.2.a A pony club must apply to its zone committee for approval of its desired official uniform and include in its submission details of uniform items, designs, colours and enhancements or any proposed changes to its currently registered uniform.
- 16.2.b As far as possible, zones should ensure that clubs' colour schemes are different and distinguishable.
- 16.2.c Club colour schemes must have one predominant colour and may have trimming colours, approved by the zone. The PCV tie, if applicable, is not considered part of the colour scheme.
- 16.2.d Once the zone grants approval, the zone secretary must advise the official club uniform to the PCV state office for official registration.

17. Official PCV Logos

17.1 Must be read in conjunction with the PCA Gear Rules

[PCA Gear Rules](#)

17.2 Approved PCV Badge, Logo and Emblem

- 17.2.a The PCV logo (Figure 4a or 4b), may be used on PCV, zone or affiliated club publications and on official PCV clothing items, in accordance with [PCA Gear Rules](#).
- 17.2.b The PCV state representatives' emblem (Figure 5) is only for use on uniforms ratified by the PCV Board for national competitions, in accordance with PCA Gear Rules.
- 17.2.c The PCV badge (Figure 6) may be used on PCV, zone or affiliated club publications and on uniforms, in accordance with PCA Gear Rules.



Figure 4a. PCV Logo



Figure 4b. PCV Logo (previous version)



Figure 5. PCV State Representatives' emblem for national competition



Figure 6. PCV Badge

- 17.2.d A club/zone may design a logo to use on its own publications, such as letterhead and newsletters, but when worn on uniform, it must fit the parameters defined in PCA Gear Rules.
- 17.2.e No other logos may be used for PCV purposes without the express permission of the PCV Board.

18. Rallies

18.1 Requirements for Rallies

- 18.1.a A rally is a structured, supervised day, authorised by the club committee and recorded as a rally in the club committee minutes.
- 18.1.b A club must hold at least eight rallies each PCV year, in accordance with Rule 6.3.a.iv. Each rally must be open to all members.
- 18.1.c The DC, or a club committee approved assistant, in accordance with Rule 6.10.e, must plan and control the rally. The DC:
 - i. Reports to and acts on behalf of the club committee.
 - ii. Performs duties as defined in Rule 6.11 and others in this rule.
 - iii. Is the only person who may sign grading on the club member card; the assistant or others must not. Remember that grading must not be altered at a competition, in accordance with Rule 15.7.a.ii.
- 18.1.d Rally Participants
 - i. Other than for instruction, coaching, supervision, and internal club competitions described in Rule 18.7, only Ready2Ride, Junior, Senior and Adult riding members are permitted to participate in a rally.
 - ii. Come and Try Pony Club riders are also permitted to participate in a rally. Attire MUST comply with Gear Rules 3.5

18.2 Attendance Records

- 18.2.a As soon as possible at or after each rally, the DC, secretary, or card secretary must maintain each riding member's attendance record in a club attendance register detailing:
 - i. Club member's registered PCV number.
 - ii. Club member's attendance or absence.
 - iii. The mount/s ridden and whether the minimum conditions of Rule 18.10 for a qualifying attendance were met.
 - iv. Grading.

Comment: This register is maintained so information can be verified in the event of a lost or damaged club member card and for verifying insurance claims.

- 18.2.b Club member cards must also be maintained as specified in Rule 15.
- 18.2.c RWH progress cards may also be maintained in accordance with Rule 18.14.g

18.3 Accidents, Injury or Sickness

- 18.3.a First aid facilities must be provided at rallies as specified in Rule 23:

-
- i. Incident report forms must be completed and forwarded to PCV as specified on the report form. Report forms are available from the PCV state office.
 - ii. If injured or sick, a club member may be excluded from any activity by the DC or first aid officer, in accordance with Rule 23.1.c.

18.4 Rally Program

- 18.4.a Minimum rally standards apply as specified in Rule 18.10. Those minimum rally program standards provide all Ready2Ride, junior riding, senior riding and adult riding members the opportunity of qualifying to compete.
- 18.4.b A rally program must provide safe, interesting and enjoyable supervised activities including:
 - i. Achievement of the aims and objectives of the PCV.
 - ii. Varied activities and some formal instruction including elements from the PCA syllabus.
 - iii. Teamwork, encouraged in preference to individual competition.
 - iv. Unmounted activities, which could include visits to equine-related venues, lectures or films, or visits from horse dentists, veterinarians or saddlers.
 - v. Wet-weather programs including unmounted games.
 - vi. Strict adherence to punctuality.
 - vii. Gear check, which must be in accordance with [PCA Gear Rules](#). The safety of the rider and horse is paramount.
 - viii. A Riders Without Horses program (RWH) at the club's discretion, in accordance with Rule 18.14.
- 18.4.c All equipment should be ready before the scheduled starting time for a rally.

18.5 Uniforms at Rallies

- 18.5.a Uniform and/or attire must be worn in accordance with [PCA Gear Rules](#).
- 18.5.b Come and Try participants must comply with 'Absolute Minimum' as per Gear Rules.

18.6 Horse Use at Rallies

- 18.6.a Refer to Rule 19 regarding horse use at rallies, activities and competitions.

18.7 Internal Club Competition

- 18.7.a At an internal club competition, a non-riding member, such as an adult supporter, family member or friend, may ride their own mount or a club member's mount on the same day as the club member, subject to these conditions:
 - i. The day participation form must be signed, in accordance with Rule 3.2
 - ii. If not an adult supporter registered with PCV, the day participation fee must be paid in accordance with Rule 3.2.
 - iii. [PCA Gear Rules](#) apply.

-
- 18.7.b Ready2Ride, junior riding, senior riding and adult riding combinations must have attended two rallies at their club in accordance with Rule 33.1.a.i.
 - 18.7.c RWH participants may compete and, if required, share a horse with a club member, subject to the DC's approval.

18.8 Qualifying Rally Attendance for Competition and other Activities

- 18.8.a Qualifying rally attendance conditions:
 - i. A combination will gain a qualifying rally attendance only if the club member achieved the minimum standards of Rule 18.10.
 - ii. A Junior, Senior or Adult riding member may gain a mounted rally attendance with up to two horses providing they have both been ridden under instruction on the day.
 - iii. Club members who participate in the RWH program must not be granted a qualifying rally attendance, in accordance with Rule 18.14.
 - iv. Should a rally extend over more than one day, only one attendance for up to two horses will be granted.
- 18.8.b A combination (club member and horse) wishing to participate in a pony club section of a competition, or any other activity (other than supervised rally or instructional activities) hosted by a pony club, must achieve the minimum number of qualifying rally attendances:
 - i. **Ready2Ride 'Rookie'**: two mounted rallies by the combination within the preceding 12 months. Rookies are not eligible for graded competitions in either a Pony Club® or open section.
 - ii. **Junior Riding member**: two mounted rallies by the combination within the preceding 12 months.
 - iii. **Senior Riding member**: two mounted rallies by the combination within the preceding 12 months.
 - iv. **Adult Riding Member**: two mounted rallies by the combination within the preceding 12 months.

18.9 Qualifying other than at a Rally

- 18.9.a Participation in a competition or non-rally activity does not count as a rally attendance except when a member is:
 - i. Attempting to qualify for any state championship competition. However, once qualification for the state championship competition has been achieved, rally attendance must not be granted if the member is absent to attend any other competitions.
 - ii. Attending a zone or state organised function or instructional activity.
 - iii. Representing their Zone or State at a State or National event. Only one of these may apply over any 12 month period, or
 - iv. Assisting at a Riding for Disabled (RDA) function.
- 18.9.b Special exemptions for competition qualification may be permitted, in accordance with Rule 18.11.

18.10 Minimum Standard for a Qualifying Rally

- 18.10.a As a minimum standard at a rally, a combination (rider and horse) wishing to be granted a qualifying mounted rally attendance, which is recorded on the club member card for competition purposes, must ride in at least one mounted session under instruction.
- 18.10.b If the rally program does not provide at least this minimum standard, or a club member does not comply with the minimum standard, a mounted rally accreditation must neither be granted nor recorded on the club member card.
- 18.10.c Once this minimum standard has been achieved, a qualifying rally may be granted and recorded for competition purposes on the club member card as described in Rule 15.

Comment: To satisfy its aims and objectives, PCV recommends that each club formulate and issue a written policy to its club members, stating club criteria that exceed this minimum standard before granting a qualifying rally attendance.

- 18.10.d Recommendations to clubs to exceed minimum standard:
 - i. Conduct full-day rally programs that encourage maximum participation by club members.
 - ii. Limit the number of short attendance (less than a full day) rallies in any year that a club member may be granted for recording as a rally qualification on the PCV club member card.
 - iii. Establish incentives and awards to encourage maximum rally attendance and participation.
 - iv. Remember that eager and willing participation by club members will only ever be the result of a quality, well managed rally program that is fun, while fulfilling the aims of pony club.

18.11 Special Exemption for Rally Attendance

- 18.11.a Exemptions apply to members under the Sports CONNECT umbrella, as per Rule 13.13.

18.12 Visiting Member at a Rally

- 18.12.a A rally attendance may be granted to a member attending a rally at another club affiliated with the PCV or an RDA function. There is no obligation for the visiting members pony club rally to be the same date as the member's home club rally.

DCs of both clubs must consent.

- i. If a member attends a rally at another club, they may be granted a qualifying rally attendance (QRA) however only ONE QRA per month is allowed at either their own club or another club. If their club holds more than one rally per month, then ONE Member club rally and one additional rally at a visited club may be granted.
- ii. The visiting club member must be mounted and satisfy the minimum rally attendance standards of Rule 18.10 if seeking a qualifying rally attendance.
- iii. When attending or assisting a Riding for the Disabled function, the RDA function must be on the same day as the member's club rally.

-
- 18.12.b In all of the above cases, the following conditions also apply:
- i. Prior to visiting another club, the member must obtain approval from both the DC of the member's club and of the club or RDA to be visited.
 - ii. The member must present their membership card to prove current membership along with the PCV Visiting Rally form to be completed by the visited club's DC.
 - iii. The member must wear their usual club uniform at the rally or match the style of attire that is worn at the visited club as pre-advised by the DC of the club to be visited.
 - iv. Before granting qualifying rally attendance the member's DC must ascertain that all these conditions have been met and that the attendance was valid before granting a rally attendance and recording it on the club member card. If the conditions and visit cannot be verified the card must be marked "Absent" along with the rally date.
 - v. Combinations may only be graded or regraded by their own DC (Rule 33.2). All other considerations are the decision of the committee of the club that is to be visited. i.e rally fee.

18.13 Unmounted Rallies

- 18.13.a Junior and Senior members, who are not participating in a RWH program, should be mounted at all club rallies unless the member is sick or injured, their horse is unfit or the rally is specified as unmounted.
- 18.13.b It is the duty of the club's DC to ensure that junior and senior members do not attend rallies unmounted on a regular basis, without good reason.
- 18.13.c Riding members may have a qualifying unmounted rally recorded on the club member card. This must be marked as "UM" or "Unmounted" in the card's "Mount" column and be signed by one of the authorised club officials, in accordance with Rule 15.4.f.
- 18.13.d Unmounted rallies do not qualify for riding members but may be recorded on the club member card if desired.
- 18.13.e For R2R, juniors, seniors and adult riders, unmounted rally attendance must always be recorded in the club attendance register, in accordance with Rule 18.2

18.14 Riders Without Horses (RWH)

- 18.14.a At the discretion of the club committee, the club may offer a RWH program, which includes junior, senior and adult riding members.
- 18.14.b The club may conduct the RWH program at rallies or at other times determined by the club committee.
- 18.14.c The club DC or a nominated assistant, approved by the club committee in accordance with Rule 6.10.e, must attend all RWH programs.
- 18.14.d The club committee must compile and approve a risk management assessment of the RWH program. Refer to Rule 22 for more information about risk management.

18.14.e The RWH program is predominantly based on horsemastership.

i. Predominantly based on horsemastership.

18.14.f PCA Gear Rules apply to RWH programs.

18.14.g RWH attendance must be recorded in the club attendance register in accordance with Rule 18.2. The RWH progress card may be used in addition to the club attendance record. RWH unmounted attendance is also recorded on the PCV club member card as "RWH".

18.14.h A junior, senior or adult riding member may ride a horse that they do not own or are not the responsible carer for, subject to the conditions of Rule 19.3.d.

18.15 Come and Try Pony Club

18.15.a A "Come and Try Pony Club" day may not be used for rally attendance.

18.15.b "Come and Try Pony Club" allows one rally participation per application in accordance with Rule 3.2.c.

19. The Horse

19.1 Welfare of the Horse

- 19.1.a PCV has adopted the Code of Conduct for the Welfare of the Horse developed by the FEI and adopted by EA.
- 19.1.b Hendra Policy – Refer to Resources and Forms/Policies on the PCV Website for detail.
- 19.1.c Riders need to consider the horse/rider weight ratio when buying a suitable horse/pony. Refer to Resources and Forms/Policies on the PCV website for information on appropriate horse rider ratios.

Recommended ratios:

- A simplistic measure – take the horse weight and divide by 6
 - The 15% rule which is:
 - a 450–500kg horse can carry 68kg.
 - a 350–400 kg pony can carry 52kg.
- 19.1.d Altered gait. A horse that displays an altered gait i.e. an equine gait abnormality, may only participate in a PCV rally, activity, clinic or competition if a vet certificate is supplied declaring the horse is able to participate and that defines a current start and end date.

19.2 Suitability and Age of Horse

- 19.2.a Stallions, colts and rigs are banned from pony club activities and competitions.
- 19.2.b A horse or pony under four years must not be graded or ridden in a pony club graded competition or mounted games.

19.3 Participation of a Horse in a Rally, Activity or Competition

- 19.3.a Horse abuse rules apply at rallies, in accordance with Rule 19.5.
- 19.3.b If the DC, assistant appointed in accordance with Rule 6.10.e, or zone representative, considers:
 - i. An injured, sick or undernourished mount is unfit to participate in an activity, the mount must not be ridden, and he may require the responsible carer to remove it from the club grounds.
 - ii. A mount unsafe or unsuitable, it must not be ridden.
- 19.3.c For rallies and RWH, a R2R, junior, senior or adult riding member may ride a horse that they do not own or are not the responsible carer for, and/or swap with another club member, subject to the club and the club member satisfying this requirement before riding:
 - i. The DC or the relevant instructor must approve the use of the horse. If a rider is under age 18, the use is subject to consent from a parent or the legal guardian of the club member and horse owner/carers.

- 19.3.d Pony club instructors and others who are neither junior nor senior, nor adult riding members must not ride a club member's mount at any pony club activity.
- 19.3.e A DC, instructor, coach or adult supporter may be mounted on their own horse to assist in instruction or supervise an activity, in which case comfort and safety requirements of PCA Gear Rules apply.
- 19.3.f Combinations participating in a pony club section must be eligible, in accordance with Rule 34.
- 19.3.g A horse must take part with only one rider throughout all phases of a competition, (in accordance with Table 1 below) with the exception of National Mounted games competitions organised by the National Mounted Games State Committee, in accordance with Rule 39.3.

Table 1- Rider/Horse Participation Table

Activity	Max. number of classes per horse per day	1 horse + 1 rider	1 horse + more than 1 rider	PCV Class OR Open Class	PCV Class AND OpenClass
HT	1	✓	✗	✓	✗
Combined Short Course	1	✓	✗	✓	✗
Supercross	1	✓	✗	✓	✗
Derby	1	✓	✗	✓	✗
Combined Training	2	1 PCV OR 1 PCV +1 Open OR 1 Open	1 PCV +1 Open OR 2 PCV OR 2 Open	✓	✓
Combined Training + Dressage	1 CT + 2 tests	✓	✓	✓	✓
Dressage	4 tests	1 PCV OR 1 PCV + 1 Open OR 1 Open	1 PCV + 1 Open OR 2 PCV OR 2 Open	✓	✓
Dressage + Showjumping	2 tests + 3 SJ rounds	✓	✓	✓	✓
Showjumping	5 rounds	✓	✓	✓	✓
Freshmans Showjumping	5 rounds	✓	✓	Open Only	Open Only
Combined Training + Freshmans	1 CT + 3 SJ rounds	✓	✓	✓	✓
Mounted Games	N/A	✓	✓	✓	✓
Gymkhana or Show	N/A	✓	✓	✓	✓

-
- 19.3.h Multiple mounts may be ridden at a competition under the conditions of Rule 34.8.
 - 19.3.i A combination cannot compete against itself in the same section nor in two sections at the same grade.
 - 19.3.j At a horse trials event, a horse must either compete in one pony club section or one open section, but not both, refer Rule 19.3.g Table 1.
 - 19.3.k For internal club competitions, refer to Rule 18.7 regarding RWH or parents, guardians, family members or friends riding club member's mounts on the same day.

19.4 Rally Accreditation for Horse

- 19.4.a Refer to Rules 18.8 and 34 for rally accreditation requirements for combinations.
- 19.4.b The rider must be qualified in accordance with Rule 34.5 and the mount must be graded in accordance with Rule 33.2. Once rider qualification and grading have been achieved the horse may be granted a qualifying rally attendance when it is ridden at one of the following:
 - i. A Zone run rider squad/clinic which has been sanctioned and minuted by the Zone.
 - ii. A State run rider squad/clinic which has been sanctioned and minuted by the PCV State Council.
- 19.4.c The qualifying activity does not have to occur on the same day as the rider's club rally and the horse cannot receive more qualifying attendances than the club holds rallies.

19.5 Abuse of Horses

- 19.5.a All forms of cruel, inhumane, or abusive treatment of horses are strictly forbidden. Such acts include:
 - i. Rapping – see 19.5.g.
 - ii. Riding an exhausted or undernourished horse.
 - iii. Excessive pressing of a tired horse.
 - iv. Riding an obviously lame horse.
 - v. Excessive use of whip/bit or spurs – 19.5.c, 19.5.d, and 19.5.e
 - vi. Dangerous riding.
 - vii. Riding in an unsafe way or losing control of the horse.
 - viii. Series of dangerous jumps.
- 19.5.b If, in the opinion of the appropriate official(s), a horse is being ill-treated (including all behaviour defined in this rule), the combination will be eliminated from the relevant part of the activity (including rallies and competition) or disqualified from any further participation in the activity.

-
- 19.5.c **Excessive use of whip:** Excessive and/or misuse of the whip may be considered abuse of the Horse and will be reviewed case by case by the Ground Jury according to the following principles:
- i. The whip is not to be used to vent an athlete's temper.
 - ii. The whip is not to be used after elimination.
 - iii. The whip is not to be used after a horse has jumped the last fence on a course.
 - iv. The whip is not to be used overhand (i.e. whip in right hand being used on left flank).
 - v. The whip is not to be used on a Horse's head.
 - vi. The whip is not to be used more than two times for any one incident.
 - vii. If a Horse's skin is broken with the whip the use is always excessive.
- 19.5.d **Excessive use of spurs:** Spurs must not be used to reprimand a horse. Such use is always excessive, as is any use that results in a horse being marked by a spur.
- 19.5.e **Excessive use of bit:** The bit must never be used to reprimand a horse. Any such use is excessive.
- 19.5.f **Illegal use of reins or objects:** Whipping a horse with the reins or any object, other than a whip, is forbidden.
- 19.5.g **Rapping:**
- i. Any form of rapping is strictly forbidden, under penalty of elimination, whether done by hand or by some means of a pulley, at any time in any place, whether in view of the public or not.
 - ii. The term "rapping" includes all the artificial techniques to induce the horse to jump higher or more carefully in competition. It is not practical to list every possible means of rapping. In general it consists of the competitor and/or dismounted assistants, for whose behaviour the competitor is responsible, either hitting the horse's legs manually with something (no matter what or by whom) or deliberately causing the horse to hit something itself, whether by building fences too large and/or too wide, setting false ground lines, placing trotting poles of a combination at a false distance, intentionally pulling or pushing the horse into a fence or otherwise making it difficult or impossible for the horse to negotiate the practice obstacle without hitting it.
- 19.5.h **Misuse of Gear:**
- i. Abuse of a Horse using natural riding aids (e.g. Hands. Legs, seat) or artificial aids that are misused in any way, too tight, ill-fitting or incorrectly used will not be tolerated. This includes but is not confined to bits, saddlery, boots, spurs, whips and any equipment that may pass a Gear Check in normal circumstances.

20. *Gear Check*

20.1 Policy

- 20.1.a Gear check must be conducted in accordance with [PCA Gear Rules](#).

21. *Lungeing*

21.1 Policy

- 21.1.a Lungeing at a rally, activity or competition must take place in a confined area designated exclusively for lungeing. If no such area exists lungeing is **not** permitted. See PCA Gear Rules for equipment allowed and attire recommended for handler.

- 21.1.b The competition schedule must state if and where lungeing is permitted at a venue.

- 21.1.c At a competition venue with a designated lungeing area, only the competitor may ride or lunge their horse or pony with the exception of riders under the age of 14 years. These riders may have another competent person over the age of 14 lunge their horse in the designated lungeing area. The penalty for disobeying this rule is elimination.

- 21.1.d** At a rally or activity an adult may lunge a member's horse or pony in a designated lungeing area. See [PCA Gear Rules](#) for equipment allowed and attire recommended for handler.

22. *Risk Management*

22.1 Policy

- 22.1.a All PCV committees, clubs and club members must follow risk management policies and procedures, which are available from the PCV web site or state office.

- 22.1.b All clubs must undertake an annual risk management review and complete the checklist, which is available from the PCV web site or state office.

23. First Aid and Equipment—Minimum Requirements

23.1 Accidents, Injury or Illness at Rallies, Activities and Competitions

- 23.1.a PCV requires clubs and zones to adhere to PCA MINIMUM MEDICAL STANDARDS FOR PONY CLUB®. (PCA>About>Policies and Risk>Medical Services Framework) [Minimum-Medical-Standards-for-Pony-Club-Guidelines-2023.pdf](#)
- 23.1.b Incident report forms must be completed for each incident and submitted online via the PCA Incident Reporting System - <https://ponyclubaustralia.com.au/Incident-Reporting/>
- 23.1.c If the first aid officer determines a rider is suspected of having a concussion or is being monitored for signs of concussion they can take no further part in ridden activities. Refer PCA Concussion policy (PCA>About>Policies and Risk>Concussion Policy and Recognition Tool) <https://ponyclubaustralia.com.au/concussion/>
- 23.1.d If the rider is to continue participation after a fall, then a fall release form must be completed in accordance with 24.1.d.

23.2 Competitions, Activities and Camps at Club, Zone and State level

- 23.2.a PCV requires clubs and zones to adhere to PCA MINIMUM MEDICAL STANDARDS FOR PONY CLUB®. (PCA>About >Policies and Risk>Medical Services Framework) [Minimum-Medical-Standards-for-Pony-Club-Guidelines-2023.pdf](#)
- 23.2.b Where Medical services are not available, event organisers may apply for an Event Medical Variation online at (PCA>Risks and policies>[Event Medical Consent Form](#))
- 23.2.c First aid log must be maintained by the designated club or zone first aid officer.

23.3 Farrier

- 23.3.a Each club is recommended to have on site some basic farrier's tools and at state activities or competitions a farrier must be present or easily on call.

23.4 Veterinarian

- 23.4.a PCV requires clubs and zones to adhere to PCA MINIMUM MEDICAL STANDARDS FOR PONY CLUB®. (PCA>About >Policies and Risk>Medical Services Framework) [Minimum-Medical-Standards-for-Pony-Club-Guidelines-2023.pdf](#)

24. *Fall of Rider and further participation in competition/activity*

24.1 **Fall of Rider Assessment**

For all competitions and activities, including the practice and warm up areas, the first fall of rider is to be categorised and actions applied as indicated using the following scale of severity.

- 24.1.a Unconsciousness – If a rider has a fall, anywhere on the venue, which results in them becoming unconscious they are automatically disqualified from taking any further part in the Pony Club® activity or competition(s) on that day. A Pony Club Australia Online Incident Report must be completed.
- 24.1.b Concussion
- i. Any rider who suffers a fall or a blow to the head must be screened for signs of concussion. As per the Pony Club Australia Concussion Policy. [Concussion | Pony Club Australia](#)
 - ii. If there are any grounds for suspicion that concussion has occurred (see the concussion information on the PCA website) the rider is not permitted to remount and continue riding. A Pony Club Australia [Online Incident Report](#) must be completed stating there is suspected concussion. Parents have no right to override the decision of the First Aid Officer/medical practitioner. The Pony Club Australia Concussion Policy should then be followed (see Pony Club Australia [Concussion Policy](#) and Recognition Tool).
- 24.1.c Injury – If a rider has a fall, anywhere on the venue, which results in an injury that necessitates treatment in an offsite medical facility, such as a Doctor or Hospital, then a parent or guardian must provide medical clearance or sign a release form for the rider to take any further part in the Pony Club® activity or competition(s) on that day.
- 24.1.d Minor Injury – If a rider has a fall, anywhere on the venue, which is of a minor nature and does not result in suspected head injury or an injury requiring outside medical assistance the rider (if over 18) or a parent or guardian must sign a release form for the rider to take any further part in the Pony Club® activity or competition(s) on that day. The signed release form must be submitted to the Event Secretary or District Commissioner, as far as possible, before proceeding in the Pony Club® activity or competition. Failure to comply with this condition will result in elimination from the competition.

Note: For all incidents (including both falls and non-fall incidents) and near misses, a Pony Club Australia Online Incident Report must be completed recording the details of the incident.

24.2 Further participation in Team Activities

- 24.2.a Fall of rider in Flat Teams or Musical Ride competitions. Refer Competition schedule.
- 24.2.b Fall of rider in Games Teams competitions.
- i. the Chief Marshall determines there is a fall of a rider during a race, the race will be stopped and all riders will hold their position. Any rider that suffers a fall or a blow to the head must be screened for signs of concussion. Refer to [PCA concussion policy](#).
 - ii. The rider who fell may be replaced by the spare rider in the team and the race will be restarted immediately.
 - iii. Should the team then complete the race the team will be awarded the minimum number of points available for that race.
 - iv. If the team does not have a 7th rider, the team is not eliminated and is awarded 10 points for that race.
 - v. A race will be re-run If the riders are required to leave their held positions and more than 1 team had not completed the race. All teams that had completed the race will hold their placings.
 - vi. Before continuing in the competition the fallen rider must:
 - be cleared by the onsite medical staff and,
 - sign the medical waiver.

25. *Vehicle Usage*

25.1 Motorcycles

- 25.1.a All motorcycles must have current recreation or road registration.
- 25.1.b Riders must hold a current Victorian licence or appropriate state license if the rider lives outside Victoria.
- 25.1.c A rider of a recreation-registered motorcycle must not carry a passenger.
- 25.1.d A rider of a road-registered motorcycle may carry a pillion passenger who must be able to place both feet on the footrests.
- 25.1.e All motorcycle riders and passengers must wear a helmet in serviceable condition meeting AS1698.
- 25.1.f All motorcycles must be insured (third party cover) through the VicRoads registration or appropriate state registration if the motorcycle is registered outside Victoria.

25.2 Tractors and Unregistered Vehicles

- 25.2.a All tractors must have at least insurance cover purchased through VicRoads or equivalent insurance cover if the tractor is located outside Victoria.
- 25.2.b The driver must hold a current car licence.

26. *Alcohol*

26.1 Policy

- 26.1.a Officials and riders must not consume alcohol eight hours prior or during an activity or competition. Under-age drinking is not permitted. The full policy is available from the PCV web site or state office. [PCV Policies](#)

27. *Medication Control of Horse and/or Rider*

27.1 Horses

- 27.1.a It is forbidden to administer any substance to a horse or to cause one to be administered in any way, with the intent to influence the horse's performance, at any pony club venue, before or during a pony club activity or before or during a pony club competition, under penalty of elimination from the activity or competition.
- 27.1.b The organisers reserve the right to test any horse and to take any necessary action, in accordance with FEI General Regulations and Veterinary Regulations.
- 27.1.c The current lists of prohibited and permitted substances are contained in the FEI Veterinary Regulations. In essence, the rules prohibit the use of any substance, other than a normal nutrient, that could, by its nature, affect the overall performance of the horse.
- 27.1.d The use of local anesthetics and antibiotic substances (antiviral, antimicrobial, anti-parasitic) for the purpose of treating minor conditions, cuts and abrasions is permitted.

27.2 Riders

- 27.2.a A rider is forbidden to take any substance with the intent to influence performance, at any pony club venue, before or during a pony club activity, or before or during a pony club competition, under penalty of elimination from the activity or competition.
- 27.2.b PCV adheres to the [Pony Club Australia Medication Control Policy](#). A current list of prohibited substances can be found on the website www.ponyclubaustralia.org.au.

28. *Organising Committee Duties*

28.1 **Organising a Competition or Activity**

- 28.1.a An appointed committee known as the organising committee must be responsible for the following requirements:
- i. Select an appropriate date, attempting to avoid clashes with other similar activities or competitions within the zone and have the zone approve it.
 - ii. Confirm the zone-approved date with the venue.
 - iii. Prepare documentation and promotions and have the zone representative approve them, in accordance with Rule 28.2.
 - iv. Appoint appropriate officials.
 - v. Arrange for all organisational requirements such as:
 - Risk management assessment, in accordance with Rule 22.
 - Ensure full list of Emergency contact details supplied by all participants, is on hand at the activity.
 - Card inspector, in accordance with Rule 15.
 - Gear check team to meet the requirements of [PCA Gear Rules](#).
 - First aid, in accordance with Rule 23 – remember incident report forms and Rider Fall release forms – have these available at the warm up area.
 - Issue photographers with an identity pass and inform them of restrictions in accordance with the Acquiring and Displaying Images of Children policy, available from the PCV web site or state office.
 - PA systems.
 - Parking and grounds layout.
 - Traffic control and sign posting to avoid confusing directions.
 - Catering: check with local authority requirements for food handlers.
 - vi. Farrier, in accordance with Rule 23.3.
 - vii. Veterinarian, in accordance with Rule 23.4.
- 28.1.b Results from concurrent competitions may be used as follows:
- i. Competitions which have HT, CT, Supercross run concurrently may use same results for all events.
 - ii. Competitions which have CT and Dressage run concurrently may use one dressage (lower number test) result for both events.

28.2 Competition/Activity Schedules, Entry Forms and Programs

- 28.2.a Organising committees must prepare and submit competition/activity documentation to the zone representative to receive approval before notifying other clubs, advertising or marketing to attract entries, in accordance with Rule 5.3.a.ix.

Comment: Competition Condition Inclusions and entry form templates are available from the PCV web site or state office.

- 28.2.b Pony clubs hosting an open section must apply and adhere to these conditions:
- i. PCV competition rules and [PCA Gear Rules](#) must be applied.
 - ii. Riding specifications (dressage tests, maximum jumping heights/spreads, etc.) must be specified on entry forms, programs and schedules for each grade, class or section to inform participants before the organising committee accepts any entries.
 - iii. Specify what uniform standards, if any, are required for the open section at a competition, in accordance with Rule 16.1.c.
 - iv. Day participation requirements apply, and all open section participants must fully satisfy them, in accordance with Rule 30.2.
 - v. Emergency contact details to be supplied at time of entry by all participants.

28.3 Prize Giving

- 28.3.a Money is not permitted as a prize in any pony club section of a competition.
- 28.3.b Club members must be dressed in full official uniform and may be dismounted at presentation ceremonies. Helmets are not required, unless mounted.

28.4 Other Competition Requirements

- 28.4.a Refer to other rulebooks for competition specific information. For example, refer to Dressage Rules for dressage procedures and [PCA Gear Rules](#) for gear check procedures.
- i. Also refer to the PCV web site for other helpful information under the rules and publications sections.

29. *Stabling, Yards & Tying up of Horses at Competitions/Rallies/Clinics/Activities*

29.1 Policy

- 29.1.a Stabling and yards should be of solid construction. The use of electrified tape, strings, ropes or chains is not permitted at Pony Club events. Electric tape can be used as a top line or 'standoff' on a steel or solid yard, but not as a standalone yard.
- 29.1.b If a horse is tied to a float, the float must be attached to a tow vehicle.

Comment: Use of baling twine or other breakable link is recommended.

30. *Open Sections, Activities and Competitions*

30.1 Definitions

- 30.1.a **Open section:** a grade, class or activity other than a rally, hosted by a PCV club, in which anyone may participate subject to these rules.
- 30.1.b **Pony Club® section:** an activity run exclusively for PCV club members, to whom eligibility Rule 34 applies, and interstate pony club members, to whom applicable interstate eligibility requirements apply.
- 30.1.c **Non-pony club member:** a participant in a Pony Club activity who is not a PCV club member nor an interstate pony club member.

30.2 Open Participant Obligations

- 30.2.a All open section participants defined in Rule 30, including current PCV riding members, who cannot prove PCV membership according to 30.4 must sign a Public Liability Declaration form to cover the duration of the competition/activity and pay a day participation fee as specified on the Day Participation form for each day of participation/competition.
 - i. Day participants must provide the relevant form to the organising committee BEFORE riding on the day of the competition/activity on penalty of elimination.
- 30.2.b Activities include but are not limited to competitions, clinics and workshops and excludes rallies.
- 30.2.c Participants must comply with applicable PCV rules and organising committee requirements.

30.3 Horse Trials Special Requirements

- 30.3.a Participants must be 8 years or over.

-
- 30.3.b A horse may participate in only one HT grade/section per day.

30.4 Pony Club members in Open Sections

- 30.4.a A pony club member who wishes to participate in an open section may do so providing:
- i. They present their club member card, virtual card or verification form to prove current membership.
 - ii. If membership is not proved, a day participation fee is payable and they must sign the day participation form, in accordance with Rule 3.2.
- 30.4.b Where both a pony club section and an open section are conducted, a combination may compete in both a pony club section and an open section, except in horse trials, but not in the same grade in accordance with Rule 30.3, providing that:
- i. PCV eligibility requirements, in accordance with Rule 34, or the applicable interstate requirements, are proven for the pony club section. Rule 34 does not apply to the open section, EXCEPT Rule 34.8 which does apply.

30.5 Multiple Horse Participation

- 30.5.a Refer to Rule 34.8.

31. *Conduct at Activities and Competitions*

31.1 Policy

- 31.1.a All persons attending a rally, activity or competition must follow the [Code of Conduct](#), which is available from the PCV web site or state office.
- 31.1.b The chief judge or most senior official may disqualify a club member, at any time, for conduct unbecoming to pony club members (including bad language, bad sportsmanship, breach of the Code of Conduct or other misbehaviour).
- 31.1.c Misconduct will be dealt with in accordance with Rule 14.
- 31.1.d Riders and owners of horses and their assistants must obey, under penalty of elimination, any order or direction given to them by any responsible official at an activity or competition.
- 31.1.e At the venue, only the competitor may ride or lunge his horse or pony in a designated lungeing area. The penalty for disobeying this rule is elimination. See Rule 21 Lungeing.
- 31.1.f At the venue, only the saddlery permitted for the competition must be used. The penalty for disobeying this rule is elimination.
- 31.1.g All persons at the venue must be careful not to do anything that might upset or hinder the progress of an activity or competition.

32. Visiting Pony Club Officials at Competitions or Rallies

32.1 Policy

- 32.1.a The pony club or zone needing the assistance of visiting officials, must:
- i. Offer reimbursement of travel expenses even though these officials may decline reimbursement.
 - ii. Extend all courtesies to visiting personnel ensuring their comfort.
 - iii. Provide all equipment to enable the official to work efficiently, such as for judges: score sheets, clipboards, tables and chairs.

33. Grading

33.1 Basic Requirements

- 33.1.a Other than a supervised rally activity or formal supervised training school/clinic, (Rule 36.7) any pony club section/activity that includes any form of dressage, showjumping or cross-county element, requires the combination to be graded for the activity.
- 33.1.b Ungraded combinations may only compete in competitions that do not require grading.
- 33.1.c These grading rules must be read in conjunction with [PCV Grading Guidelines](#), which is available from the PCV web site or state office.
- 33.1.d The grading system for each discipline is based on the ability of the horse and rider as a combination to perform safely and competently at a specific standard in the discipline.
- 33.1.e A separate grading is required for each discipline and horse and rider combination.
- 33.1.f Grading must not occur or be altered at a competition, in accordance with Rule 15.7.a.ii.
- 33.1.g Grading:
- i. If sufficiently experienced, the DC may grade on their own initiative after taking into consideration all relevant information such as competitive ability and performances.
 - ii. Alternatively, the DC may take advice from experienced and knowledgeable people or their ZCI to assist their considerations.
 - iii. Do not allow parents to influence the grading of their children.

33.2 Before Grading

- 33.2.a The combination must have attended two or more rallies at the member's club.
- 33.2.b A transferred combination, which is ungraded or requires regrading, must have attended two or more rallies at the new club.
- 33.2.c The initial grading may take place at the end of or after the second club rally attendance.
- 33.2.d Re grading may be done at any time other than at a competition, in accordance with Rules 33.1.f. and 15.7.a.ii.
- 33.2.e The DC only must record and sign all grading on the rider's current club member card.
- 33.2.f A horse under four years must not be graded.
- 33.2.g Club members under 8 years must not be graded for horse trials, nor compete in any competitions that involve Cross Country.
 - i. D Certificate recommended prior to Grading for Horse Trials.

33.3 Specific Details for Grading

- 33.3.a The DC only must record and sign all grading on the rider's current club member card. Current, relevant gradings to be carried forward to new cards including the original grading date.
- 33.3.b For specific details on grading for each discipline, refer to PCV Grading Guidelines.

33.4 Downgrading

- 33.4.a Downgrading of combinations is allowed at the discretion of the DC.
- 33.4.b Combinations MAY compete HC at a grade below their current grading if they have failed to complete 2 or more XC courses in the previous 6 months at their current grading.
- 33.4.c Advanced & PCV110:
 - i. Combinations graded at Advanced Dressage may compete in PC Grade 1 dressage classes at events where an Advanced class is not offered.
 - ii. Combinations graded at PCV110 Horse Trials may compete in PC Grade 1 horse trials events where a PCV110 class is not offered.

33.5 Upgrading

- 33.5.a Any combination that is consistently placed in any graded discipline must be reassessed by the DC, or their appointed representative, and be upgraded if appropriate according to grading guidelines, or only be permitted to ride Hors Concours at future competitions providing they satisfy the requirements of Rule 34.10.

33.6 Changed Grading between Close of Entry and Day of Competition

- 33.6.a A combination, which is regraded after the close of a competition's entries, must apply to the competition organising committee to ride in their new grade.
- 33.6.b If the organising committee of the competition is unable to offer the combination an entry in their new grade, an upgraded combination is permitted to compete Hors Concours in their previous grade, providing they satisfy the requirements of Rule 34.10.
- 33.6.c Before the day of competition, the organising committee must advise the participant whether the combination will compete in their new grade or compete Hors Concours in their previous grade.
- 33.6.d Downgraded combinations must compete in their new grade, in accordance with Rule 33.4.a.

34. *Eligibility for Pony Club Activities and Competitions*

34.1 Activities and Training

- 34.1.a Activity means: Non-instructed activities including camps, trail rides and Freshmans jumping.
- 34.1.b Training means: Formal supervised training such as supervised/instructed rally sessions and instructional clinics.

34.2 Competitions

- 34.2.a Competition means: a competitive event organised by a PCV pony club, zone or state organising committee.
- i. A competition may be open to:
- Intra club: for a club's own members. (Rule 18.7).
 - Inter-club: other PCV clubs and/or their club members.
 - Zones or states.
 - Non – pony club members.

34.3 Club Member Cards

- 34.3.a The club member must present card(s), in accordance with Rule 15.5.c, at all activities and competitions to prove eligibility and registration with PCV. Photocopies of card(s) are not permitted. Verification forms may only be used as described in Rule 15.8.

34.4 Age of Rider

- 34.4.a The club member must be at least age 8 for horse trials competitions, in accordance with Rule 33.2.g.
- 34.4.b Refer to Rule 34.11 regarding state and national activities and competitions.

34.5 Rally Attendance Requirements for Competitions

- 34.5.a **Junior riding member:** two mounted rallies by the combination within the preceding 12 months.
- 34.5.b **Senior riding member:** two mounted rallies by the combination in the preceding 12 months.
- 34.5.c **Come and Try Pony Club** must not be considered as a competition qualification.
- 34.5.d **Adult Riding Member:** may receive rally attendance and may qualify to ride in a pony club Adult Riding Member section of a competition and require two mounted rallies by the combination in the preceding 12 months.
- 34.5.e **Ready2Ride - Rookies:** are not eligible for graded competitions.
- 34.5.f **Riders Without Horses:** Two mounted RWH rallies by the combination in the preceding 12 months.

34.6 Grading

- 34.6.a The horse and rider as a combination must be graded specifically for the discipline in which they are competing, in accordance with Rule 33.
- 34.6.b Ungraded combinations may only compete in competitions that do not require grading, in accordance with Rule 33.

34.7 Exemptions

- 34.7.a Special exemptions may apply for junior members, in accordance with Rule 18.11.
- 34.7.b A special exemption does not remove the requirements for two mounted rallies within the preceding 12 months and grading for the combination. Refer to Rule 18.11. Also, DAP may allow for some exemptions. Refer to Rule 13.11 for conditions.

34.8 Multiple Horse Participation

- 34.8.a A rider may participate in an activity or competition on more than one horse (combination); in more than one class or grade subject to:

- i. Combinations participating in a pony club section must be eligible, in accordance with Rule 34.
 - ii. Refer Rule 19.3.g Table 1 for allowed combinations in competitions.
- 34.8.b A rider wishing to enter multiple horses into a competition may nominate a preferred riding order on the entry form. However, the organising committee may accept none, one or more of the entries, at its sole discretion, and the rider must abide by the draw.

34.9 Financial Club Membership

- 34.9.a Club members must be financial with the club they belong to and be registered with PCV.

34.10 Hors Concours (HC)

- 34.10.a Competing HC means riding non-competitively, without being eligible to win a place or an award in a competition.
- 34.10.b Other than as described in Rule 33.5 and 33.6, HC must only be used in the case of card anomalies or with permission of the DC or ZR as in 34.10.e. In all cases the PCV club member must present their card (or verification form if the card is lost or damaged) to prove that:
- i. the combination is graded for the competition (may ride HC one level below their grade),
 - ii. the combination has attended at least two rallies, and
 - iii. the rider is a financial club member and registered with the PCV.
- 34.10.c HC cannot be used to qualify for a state competition.
- 34.10.d Downgraded combinations must compete in their new grade, in accordance with Rule 33.6.d.
- 34.10.e Refer to Rule 33.5.a where any combination consistently placed in their grade but not able to be upgraded must be encouraged by their DC or ZR to take part in competitions HC.

34.11 State and National Competitions

- 34.11.a Riders who have been in pony club for more than two years and are aged 14 years & over must have attained their "C" Certificate in order to compete at any state or national competition.
- 34.11.b Riders from interstate are not eligible to compete in PCV State Championships as they have not qualified for the event under the PCV qualifying criteria.
- 34.11.c If there is a date change to a State Championship event that results in a senior rider being no longer eligible to compete at the Championships due to their age, a special exemption may be granted by the Zone Representative so long as:
- i. the rider is a financial riding member of PCV at the time of the Championships and
 - ii. the combination has fulfilled all qualifying criteria

NB: Only adult riding members aged 25 may qualify and compete against other PCV riding members under these circumstances for State Championships.

34.11.d Other eligibility as stated in entry conditions and in accordance with Rules 37 and 39.

34.12 Other Considerations

Refer to Rule 19 (The Horse) and Rule 20 (Gear Check).

35. *Queries and Protests*

35.1 Queries

- 35.1.a A competitor may raise a query at a competition, on a form provided by the organising committee, available at the event secretary's office. Organising committees may obtain the query form from PCV web site or state office.
- 35.1.b Once completed, the competitor must hand the query form to the event secretary for investigation by the appropriate official.
- 35.1.c The appropriate official must answer the query verbally as soon as possible. If the competitor is not satisfied with the explanation, they may lodge a protest within the prescribed time.

35.2 Protests

- 35.2.a A competitor may lodge a protest in writing, with a \$50 fee, with the event secretary no later than one hour after the happening that gave rise to the protest or no later than 30 minutes after posting of final scores. The jury of appeal or appropriate persons will consider the protest and their decision is final. The competitor forfeits the fee unless the jury of appeal or appropriate persons uphold the protest or decide that there were reasonable grounds for the protest.

36. Activities and Competitions

36.1 Conduct at Activities and Competitions

- 36.1.a Conduct of all attendees must be in accordance with the Code of Conduct and Rules 14 and 31.

36.2 Inter Club Activities and Competitions

- 36.2.a Clubs are encouraged to visit each other as described in Rule 6.11. Also, to organise and host competitions based on the rules contained within this handbook and other rule books such as Horse Trials Rules, Dressage Rules, and Games.
- 36.2.b Organising committees must comply with Rule 28.

36.3 Two Rallies for Combination in all Activities

- 36.3.a For specific definitions and requirements, refer to Rule 34:
- i. A combination must have attended two mounted rallies at their club in the 12 months preceding and may need to be graded. This also applies to activities such as camps, trail rides and internal club competitions.
 - ii. In other competitions, other eligibility must be satisfied.

36.4 Camps and other Activities

- 36.4.a For all activities other than a supervised rally activity or instructional session, rider eligibility in accordance with Rule 34 always applies.

36.5 Ungraded Competitions or Activities

- 36.5.a Activities for ungraded combinations must be in accordance with Rule 33.1.
- 36.5.b Freshmans Showjumping. This activity is NOT a competition. Riders must not be led over jumps. A pole is not a jump. Schedule must include:
- i. Entry Fees, heights and spreads.
 - ii. No horse may jump more than 5 rounds.
 - iii. All riders MUST sign a Liability Waiver, as per Insurer's cover requirements.
 - iv. Participation (not placing) ribbons may be awarded. (optional for clubs).
 - v. The organising committee may advise riders that they should not jump further heights.

36.6 Leadline riders

- 36.6.a Riders may be led at pony club rallies, clinics, activities, and gymkhanas including Topsy rings.

-
- 36.6.b Leaders need to be effective and aware horse handlers. They are there to ASSIST the rider with steering, stopping, and making the pony go- NOT to pull or push the pony around.
- i. The leader must:
 - Be a competent handler.
 - Wear correctly fitting, covered footwear.
 - Never wrap the lead rope around their hand nor entwine with fingers in the clip or ring.
 - Keep the pony at a safe distance from other horses and people.
 - Be careful when changing direction or pace not to unbalance the rider.
 - ii. The leader is recommended to:
 - Always lead from the pony's shoulder where contact with pony and rider are optimum.
 - Hold the lead rope 5 – 10 cm below the clip, giving the pony headroom whilst remaining in control.
- 36.6.c The horse must be bridled and led with a properly fitted halter (worn under the bridle) with a lead rope attached to the head collar or a lead line connected to both bit rings.
- 36.6.d Competitions
- i. Riders may NOT be led in any competition unless laid down in class conditions; e.g. Led Rider classes, games etc.
 - ii. Riders may NOT be led over jumps at any competition or activity including Freshmans.
 - iii. Riders with Sports Connect exemption may be led if exemption states.

36.7 Supervised Training & Instructional Clinics of Graded Disciplines.

- i. Graded disciplines are Dressage, Cross Country and Showjumping.
- ii. Participation recognition is optional.
- iii. Riders may be led during training except over jumps (a pole is not a jump), however where assistance is required riders may be led over an obstacle eg ditch or water or height up to 35cm at the sole discretion of the coach.
- iv. Supervised Training must be conducted by a registered PCV coach in accordance with Rule 40.2.
- v. Formal Supervised training must not be conducted during competitions.
- vi. Training may only be conducted at rallies or formal supervised training schools/clinics.

37. State Level Pony Club Competitions

37.1 Conduct of and Participation in State Competitions

- 37.1.a PCV may conduct state activities or competitions to advance its objectives and it may collaborate with other bodies in the conduct of such competitions or activities. The PCV State Council may authorise the participation of club members as officials and advisors at these activities or competitions and as official PCV representatives.
- 37.1.b In the event of the postponement of any activity or competition conducted by the PCV, the conditions of the postponed activity or competition must be the same as the conditions applicable at the time of the original activity or competition.

37.2 State Events

- 37.2.a PCV State Council approves the organizing committees and appoints an event coordinator to organise all State level competitions. All committee members must be a member of a current financial club and registered on the PCV database.
- 37.2.b Dressage and Showjumping judges must hold current EA or HRC AV Accreditation and be approved by the PCV State Council. Judges without accreditation may still be approved at the discretion of PCV State Council.

37.3 C Certificate Requirements for State Competitions

- 37.3.a C proficiency certificates are required, in accordance with Rule 34.11.a.

37.4 Dressage and Showjumping State Championships

- 37.4.a The competition is held annually and has been in early March.
- 37.4.b Showjumping competitions are for PA, PB, PC and PD combinations.
- 37.4.c Dressage competitions are for Advanced, Grade 1, Grade 2, Grade 3 and Grade 4 combinations. All combinations must be graded.
- 37.4.d The zones conduct qualifying competitions each year to select club competitors for these competitions.
- 37.4.e The zone representative is not compelled to enter combinations into the showjumping and dressage state championships if:
 - i. The zone representative deems combinations in qualifying competitions to be of an unsatisfactory state-level standard,
- 37.4.f The Nations Cup draw method [the first rider from all teams to be ceded to ride first, followed by the second rider from all teams, then the third rider from all teams and so on] must be used for both the Dressage and Showjumping competitions.

37.5 Horse Trials State Championships

- 37.5.a This competition is held annually and has been in early May. It may incorporate the Interzone Teams Horse Trials.
- 37.5.b This is a three-phase competition of dressage, cross country and showjumping for grades PCV110, (at the discretion of the host zone in that year) 1, 2, 3,4 and 5 providing a test requiring careful and systematic training of the horse, courage, determination and all-round riding ability. All combinations must be graded.
- 37.5.c Refer to Horse Trials Rules and Rule 34 for details of rules and qualifying requirements for entry into the competition.
- 37.5.d The zone representative is not compelled to enter combinations into state championships if:
 - i. the zone representative deems combinations in the qualifying competitions to be of an unsatisfactory state-level standard,
- 37.5.e The PCV State Council must approve the technical advisor.

37.6 InterZones Teams Horse Trials

- 37.6.a The competition is for Grade 4 and 5 Zone teams, and may be incorporated in the State Horse Trials Championships.
- 37.6.b The zone representative is not compelled to enter combinations into the state championships if:
 - i. The zone representative deems combinations in the qualifying competitions to be of an unsatisfactory state-level standard,
- 37.6.c Refer to Horse Trials Rules and Rule 34 for detail of rules and qualifying requirements for entry into the competition.

37.7 Games, Flat and Musical Ride Teams State Championships

- 37.7.a These championships are held annually.
- 37.7.b These championships involve club teams representing zones.
- 37.7.c The zones conduct qualifying competitions each year to select teams for these championships. However, if a rider substitution is required through injury or illness, the Zone Representative will firstly endeavor to substitute a rider who has qualified through the Zone. If this cannot occur, then the Zone Representative can substitute a rider who is qualified pursuant to Rule 18.8.b.c.
- 37.7.d If the zone representative deems competitors in the qualifying competitions to be of an unsatisfactory state-level standard, the zone representative is not compelled to enter riders into the State Championship.

37.8 Tetrathlon State Championships

- 37.8.a This competition is organised by a state-appointed committee.
- 37.8.b A tetrathlon is a variant of the modern pentathlon. It comprises of four disciplines: shooting, swimming, riding and running.
- 37.8.c The order for completing the four phases (riding, running, shooting and swimming) will be at the discretion of the organiser. The event may be held over one day or up to four consecutive days.
- 37.8.d May be individual or team format.
- 37.8.e Refer to [PCA NATIONALS TETRATHLON RULES](#) for detail of rules.

37.9 Ride to Time State Final

- 37.9.a This event is held at a Racetrack venue and sponsored by Racing Victoria.
- 37.9.b Zones conduct qualifying heats to select combinations for Maiden (HT Grade 3, 4, 5) and Open (HT Grade 1 & 2) categories.
- 37.9.c This event teaches riders the skill of judging pace and rewards them for riding most accurately to the clock over 1000m.

38. Separating Equality of Scores (Count Back)

38.1 Purpose

- 38.1.a These rules apply to separating equal scores for winners and placegetters at the:
- i. PCV State Championships for Dressage and Showjumping, Horse Trials, and Games, Flat and Musical Ride teams.
- 38.1.b Club and other zone competitions may use these rules providing the entry form or program schedule specifies it.
- 38.1.c Equal scores are separated by applying the steps listed below in sequence until separation is achieved.

38.2 Dressage

- 38.2.a Individual: single test competition:
- i. The higher total collective marks will decide the higher placing
 - ii. If these marks are equal, the placing remains tied.
- 38.2.b Individual: multiple test competition: One Overall Prize.
- i. Highest score in the highest numbered test.
 - ii. If these scores are equal, places will be determined as for a single test competition, using the highest numbered test.
 - iii. If there is still a tie, this process is repeated with the next highest numbered test until a winner is determined or until there are no further tests to compare, in which case the placing remains tied.
- 38.2.c Team:
- i. Refer to the current PCV Dressage and Showjumping State Championships booklet.

38.3 Showjumping

- 38.3.a Individual: Multiple events: Count back to higher place in nominated event as in Competition schedule, or other method as specified in schedule.
- 38.3.b Team: Refer to the current PCV Dressage and Showjumping State Championships booklet.

38.4 Horse Trials

- 38.4.a Individual:
- i. Lowest cross-country penalties including jumping and time penalties.
 - ii. Cross-country time closest to the time allowed.
 - iii. Lowest showjumping penalties including jumping and time penalties.

- iv. Showjumping time closest to time allowed.
- v. Lowest Penalty marks in the dressage test.
- vi. The higher dressage collective marks total
- vii. If these figures are equal, the placing remains tied.

38.4.b Team:

- i. Refer to the current PCV Horse Trials State Championships Booklet.

38.5 Combined Training

38.5.a All competitions:

- i. Lowest showjumping penalties including jumping and time penalties.
- ii. Showjumping time closest (above or below) to the time allowed.
- iii. Lowest Penalty marks in the dressage test.
- iv. The higher dressage test collective marks total.
- v. If these marks are equal, the placing remains tied.

38.6 Games

38.6.a Individual:

- i. No separation is usually required as riders are placed in order of finishing. However, should two or more riders finish at the same time, they will be placed equal.

38.6.b Team:

- i. Points will be awarded as follows; 1st place = 50 points, 2nd place = 40 points, 3rd place = 30 points, 4th place = 20 points and 5th place = 10 points.
- ii. In the event of equality of points for first placing there will be a run off to decide first and second placing. A count back will decide subsequent placings until a winner is determined.
- iii. A Count back will decide subsequent placings:
 - The count back is determined by the highest number of first places over all heats. If any places are still tied, the highest number of second places over all heats, and so on until all places are determined.
 - If, after the above count back, any places to sixth remain tied, the places will be decided by the higher placing in which the equal teams competed against each other.

38.7 Flat Teams

- i. The higher total collective marks will decide the higher placing.
- ii. If these marks are equal, the placing remains tied.

38.8 Musical Ride

- i. The higher artistic impression marks.
- ii. Highest overall impression marks.
- iii. If these marks are equal, the placing remains tied.



39. National and International Pony Club Activities or Competitions

39.1 Common Conditions

- 39.1.a “C” proficiency certificates are required, in accordance with Rule 34.11.a.

39.2 Inter Pacific Exchange Rally

- 39.2.a The Inter Pacific Exchange Rally is conducted every two years. Teams of six riders from Australia and countries in the Pacific basin meet in the host country for a series of social functions, competitive and non-competitive activities.
- 39.2.b As pre-requisites for selection, applicants must:
- i. Be a senior riding member.
 - ii. Hold a “B” proficiency certificate.
 - iii. Have been a PA Grade and/or Grade 1 competitor.

39.3 National Mounted Games

- 39.3.a The national mounted games are a national competition for state teams of five riders. One of the seven states hosts this competition each year.
- 39.3.b The Victorian program is organised by a state-appointed committee.
- 39.3.c The national mounted games consist of:
- i. A senior section called the National Mounted Games consisting of club members from age 17 years to 25 years.
 - ii. A junior section called the Prince Phillip Games consisting of junior members 16 years and under on 1 January in the year of the competition.
- 39.3.d Selection of senior, junior and development training squads is conducted each year in January. Each of the three squads contains 12 club members, nominated to the PCV State Council for approval.
- 39.3.e Once approved by the PCV State Council, each squad member undertakes a rigorous training regime and is required to be available to participate in all designated activities and competitions for approximately 12 months until the date of the next team selection.
- 39.3.f A selection panel chooses a team of five for both the seniors and juniors from the training squads, for each competition throughout the year.
- 39.3.g The organising committee must lodge documents, in accordance with Rule 4.5.e at least three weeks before a PCV State Council meeting that allows time for amendments and approval.

39.4 International Mounted Games

- 39.4.a Each year one of the competing countries hosts the international mounted games.
- 39.4.b Riders must have competed at national level to be eligible for selection. The individual states nominate team members to be eligible for selection at the national competition.

40. Coaching and Instruction

40.1 NCAS Qualifications

- 40.1.a From January 1st 2015 any club with a membership of 20 or more riders must have at least one current Equestrian NCAS qualified Coach coaching at each mounted club rally.

40.2 Before Instructing

- 40.2.a All Coaches must be a PCV coach member and provide evidence of membership before coaching at any PCV activity/rally/clinic. Membership is purchased through PCV website member portal. An instructor cannot teach at any pony club rally/activity until this card is produced. The club instructor cover will be negated if the organisers allow an instructor to teach without this membership.
- 40.2.b An instructor is required to complete a pony club instructor's form and accept the Code of Conduct, prior to instructing at any pony club. The form is available from the PCV web site or state office. The club secretary must hold completed forms in a safe and secure place with controlled access.
- 40.2.c A Working with Children's Check will be required and conditions of the Act must be met.

40.3 Pony Club Instruction

- 40.3.a Club instructors must work closely with the club chief instructor and DC.

Comment: The suggested maximum number of riders per session, per instructor is ten to twelve. Ideally, groups should be divided into age and/or ability.

- 40.3.b Pony club teaching aims at uniformity of instruction. The PCV does not claim this is the only way to teach riding, but to avoid confusion and possible safety hazards, instructors are expected to be familiar with pony club teaching methods.
- 40.3.c Pony club instructor courses are offered under the Pony Club Australia - NCAS umbrella, where the prime purpose is to train new instructors to become proficient in instructing at club level.
- 40.3.d Special emphasis is placed on leadership training and the aim of pony club to help all club members enjoy their riding and improve their skills.

-
- 40.3.e To plan their teaching program, all pony club instructors must use the current PCA NCAS Syllabus Workbooks, PCA Syllabus of Instruction, Manual of Instruction and Horsemastership for the Australian Rider.
 - 40.3.f Course organisers must circulate zone clubs with information on any instructors' courses planned. This must be done well in advance of the date of the course, to allow club secretaries time to pass on this information to club instructors.
 - 40.3.g Course organisers are responsible for course costs and financial management.
 - 40.3.h An instructor or coach must not mount a club member's horse at any time during the course of a club rally, activity or competition, in accordance with Rule 19.2.e.

Comment: Also refer to Bylaw 6.13.

40.4 PCV Instructors' Certificates

- 40.4.a All Coaches will be offered training and Accreditation under the PCA National Coaching Accreditation Scheme.

40.5 National Coaching Accreditation Scheme – PCA Preliminary Coaching

- 40.5.a The PCA NCAS Preliminary course is organised at State level by the State Coaching Director. It is designed as an introduction to pony club and coaching and will be offered at club level.
- 40.5.b Enrolment pre-requisites:
 - i. A participant may begin training at 16 years of age but must be aged 18 years or over to be assessed.
 - ii. A participant must be or become a member of a pony club affiliated with the PCV.
 - iii. Parents and interested people not wishing to coach are welcome to participate as an introduction to pony club and general horse care.
- 40.5.c On completion of the PCA NCAS Preliminary qualification coaches will be encouraged to assist at pony club rallies.
- 40.5.d Successful candidates will be issued with a nationally recognised qualification endorsed by PCA and the Australian Sports Commission (ASC).

40.6 National Coaching Accreditation Scheme – PCA NCAS Level 1

- 40.6.a The pre requisite for PCA NCAS level 1 is the successful completion of the PCA NCAS Preliminary qualification.
- 40.6.b The PCA NCAS Level 1 course is organised at State level by the State Coaching Director. Candidates can work at their own pace in their club and/or attend courses as required.

-
- 40.6.c Enrolment pre-requisites:
- i. A candidate must be aged 18 years or over.
 - ii. A candidate must be or become a member of a pony club affiliated with the PCV.
 - iii. A candidate must have attained a PCA NCAS Preliminary qualification and must have completed a minimum of six months coaching experience at a pony club.
- 40.6.d Reference books are available from the PCV state office.

40.7 National Coaching Accreditation Scheme Assessors

- 40.7.a The PCV appoints eligible candidates to attend the PCA National Assessors Course as required. The appointment has a period of tenure and Assessors must complete updating activities to remain current. A position description is available on the PCV website.

41. Proficiency Tests and Certificates

41.1 Organisation

- 41.1.a The zone examining secretary, in accordance with Rule 5.15, is responsible for the organisation and registration of proficiency tests within the zone.
- 41.1.b There are eight standards or levels of proficiency – “E” (the lowest), “D”, “D” Star, “C”, “C” Star, “B” and “A” (the highest), with a specialist test – “K” for the active rider.
- 41.1.c The standards or levels relate to the work set down in the PCA Syllabus of Instruction. The appropriate certificate of proficiency is available to any pony club member successfully completing the relevant test. Proficiency certificate discs, worn behind the PCV badge indicate the certificate level attained.

42. Awards

42.1 Award of Merit

- 42.1.a The PCV State Council may confer the Award of Merit.
- 42.1.b The Award of Merit is the highest service award for pony club members aged at least 19 years and not older than 26 years, at the time of nomination for the award. (Service means carrying out tasks that benefit the club, its members and perhaps the wider community. Service does not include riding ability or competing in teams.)
- 42.1.c The nominee may receive the award once only.
- 42.1.d To be considered worthy of nomination for this award, the nominee must have:
 - i. Been a riding or non-riding member of a pony club for at least three years and attended rallies as often as possible during that time.
 - ii. Always been helpful, considerate and courteous to all involved with the pony club
 - iii. Always presented and conducted themselves in an exemplary manner.
 - iv. Completed outstanding service (as defined above at the least), to the club for a minimum of two years.
- 42.1.e Each year the PCV State Council requests clubs to submit nominations to their zone.
- 42.1.f The zones set their own closing date. However, zone nominations must reach the PCV State Council by 30 June.
- 42.1.g All nominees must be financial.
- 42.1.h All applications to zone accepted or rejected must be tabled to the PCV State Council before the closing date.

42.2 Distinguished Service Award

- 42.2.a The PCV State Council may confer the Distinguished Service Award. Sub-committees, Zone representatives or zone executives may recommend nominees to the PCV State Council by 30 June. All applications to zone accepted or rejected must be tabled to the PCV State Council.
- 42.2.b The award is for a person who has given distinguished service to the pony club movement, but not in the same category as that required for PCV life membership.
- 42.2.c The award may be granted to persons who have given distinguished service at state or zone level.
- 42.2.d Criteria for Distinguished Service Award:
 - i. Consistent and sustained contribution at zone and state levels for a minimum of ten years.

-
- ii. Must have held office at club or zone level.
 - iii. Must respect the aims and objectives of the pony club movement.
 - iv. Remain objective and unbiased in all circumstances.
 - v. Have the ability to communicate with all pony club members and other personnel.
 - vi. Display appropriate presentation at all activities.

42.3 PCV Life Membership

- 42.3.a The PCV State Council may recommend to the Board a nominee for PCV Honorary Life Membership (without voting rights), which is the highest award PCV can bestow for service.
- 42.3.b The nominee must have:
 - i. provided outstanding, active and continuous service, which contribution and commitment should be obvious to others involved with PCV,
 - ii. been an exemplary representative and ambassador for the organisation on all occasions,
 - iii. served as a state and/or as one of its sub-committee members, for at least ten years and preferably longer, five of which must have been as a State Councillor, and
 - iv. carried out their duties in a competent and efficient manner.

42.4 PCV Awards

- 42.4.a Closing date is 31 August, see website for nomination details.
 - i. Rider of the Year aged 12 years and under*
 - ii. Rider of the Year aged 13 - 17 years*
 - iii. Rider of the Year aged 18 -25 years*
 - iv. Coach of the Year.
 - v. Volunteer of the Year.
 - vi. Club of the Year.

* Age as at 1st January in the year of nomination.

42.5 Other Awards

- 42.5.a Clubs and zones may award Honorary Life Membership of their organisation if their rules permit.
- 42.5.b In addition to life membership, zones and clubs may introduce their own special awards.

43. Code of Conduct for the Welfare of the Horse

43.1 At all stages during the preparation and training of Competition Horses, welfare must take precedence over all other demands.

a Good Horse management

Stabling, feeding and training must be compatible with good horse management and must not compromise welfare. Any practices, which could cause physical or mental suffering, in or out of Competition, will not be tolerated.

b Training methods

Horses must only undergo training that matches their physical capabilities and level of maturity for their respective disciplines. They must not be subjected to any training methods which are abusive or cause fear or for which they have not been properly prepared.

c Farriery and tack

Foot care and shoeing must be of a high standard. Tack must be designed and fitted to avoid the risk of pain or injury.

d Transport

During transportation, Horses must be fully protected against injuries and other health risks. Vehicles must be safe, well ventilated, maintained to a high standard, disinfected regularly and driven by competent staff. Competent handlers must always be available to manage the Horses.

e Transit

All journeys must be planned carefully, and Horses allowed regular rest periods with access to food and water in line with current FEI guidelines.

43.2 Horses and Athletes must be fit, competent and in good health before they are allowed to compete.

a Fitness and competence

Participation in Competition must be restricted to fit Horses and Athletes of proven competence.

b Health status

No Horse showing symptoms of disease, lameness or other significant ailments or pre-existing clinical conditions should compete or continue to compete when to do so would compromise its welfare. Veterinary advice must be sought whenever there is any doubt.

c Doping and Medication

Abuse of doping and medication is a serious welfare issue and will not be tolerated. After any veterinary treatment, sufficient time must be allowed for full recovery before Competition.

d Surgical procedures

Any surgical procedures that threaten a competing Horse's welfare or the safety of other Horses and/or Athletes must not be allowed.

e Pregnant/recently foaled mares

Mares must not compete after their fourth month of pregnancy or with foal at foot.

f Misuse of aids

Abuse of a Horse using natural riding aids or artificial aids (e.g. whips, spurs, etc.) will not be tolerated.

43.3 Events must not prejudice Horse welfare.

a Competition areas

Horses must only be trained and compete on suitable and safe surfaces. All obstacles must be designed with the safety of the Horse in mind.

b Ground surfaces

All ground surfaces on which Horses walk, train or compete must be designed and maintained to reduce factors that could lead to injuries. Particular attention must be paid to the preparation, composition and upkeep of surfaces.

c Extreme weather

Competitions must not take place in extreme weather conditions if the welfare or safety of the Horse may be compromised. Provision must be made for cooling Horses quickly after competing.

d Stabling at Events

Stables must be safe, hygienic, comfortable, well ventilated and of sufficient size for the type and disposition of the Horse. Clean, good quality and appropriate feed and bedding, fresh drinking water, and washing-down water must always be available.

e Fitness to travel

After Competition, a Horse must be fit to travel in accordance with the FEI guidelines.

43.4 Every effort must be made to ensure that Horses receive proper attention after they have competed and that they are treated humanely when their Competition careers are over.

a Veterinary treatment

Veterinary expertise must always be available at an Event. If a Horse is injured or exhausted during a Competition, the Athlete must dismount and a veterinarian must check the Horse.

b Referral centres

Wherever necessary, the Horse should be collected by ambulance and transported to the nearest relevant treatment centre for further assessment and therapy. Injured Horses must be given full supportive treatment before transport.

c Competition injuries

The incidence of injuries sustained in Competition should be monitored. Ground surface conditions, frequency of Competitions and any other risk factors should be examined carefully to indicate ways to minimise injuries.

d Euthanasia

If injuries are sufficiently severe the Horse may need to be euthanized by a veterinarian as soon as possible on humane grounds and with the sole aim of minimising suffering.

e Retirement

Every effort should be made to ensure that Horses are treated sympathetically and humanely when they retire from Competition.

43.5 The FEI urges all those involved in equestrian sport to attain the highest possible levels of education in their areas of expertise relevant to the care and management of the Competition Horse.

This Code of Conduct for the Welfare of the Horse may be modified from time to time and the views of all are welcomed. Particular attention will be paid to new research findings and the FEI encourages further funding and support for welfare studies.

This Horse Welfare Code of Conduct has been developed by the FEI and adopted by EA and PCV.